

**Product Name: DDX5 Rabbit Monoclonal Antibody**  
**Catalog #: AMRe01901**



## Summary

<b>Production Name</b>	DDX5 Rabbit Monoclonal Antibody
<b>Description</b>	Recombinant Rabbit Monoclonal antibody
<b>Host</b>	Rabbit
<b>Application</b>	WB,IHC-F,IHC-P,ICC/IF,IP
<b>Reactivity</b>	Human,Mouse,Rat

## Performance

<b>Conjugation</b>	Unconjugated
<b>Modification</b>	Unmodified
<b>Isotype</b>	IgG
<b>Clonality</b>	Monoclonal Antibody
<b>Form</b>	Liquid
<b>Storage</b>	Store at 4°C short term. Aliquot and store at -20°C long term. Avoid freeze/thaw cycles.
<b>Buffer</b>	50mM Tris-Glycine(pH 7.4), 0.15M NaCl, 40% Glycerol, 0.01% Sodium azide and 0.05% BSA
<b>Purification</b>	Affinity Purified

## Immunogen

<b>Gene Name</b>	DDX5
<b>Alternative Names</b>	DDX5; G17P1; HELR; HLR1; Probable ATP-dependent RNA helicase DDX5; DEAD box protein 5; RNA helicase p68
<b>Gene ID</b>	1655
<b>SwissProt ID</b>	P17844

## Application

<b>Dilution Ratio</b>	WB: 1/500-1/1000 IHC: 1/50-1/100 IF: 1/50-1/200 IP: 1/20
<b>Molecular Weight</b>	Calculated MW: 69 kDa; Observed MW: 69 kDa

**Product Name: DDX5 Rabbit Monoclonal Antibody**  
**Catalog #: AMRe01901**



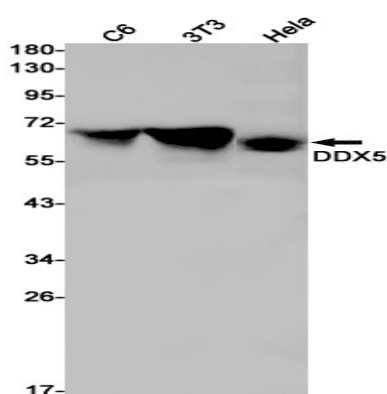
## Background

RNA-dependent ATPase activity. The rate of ATP hydrolysis is highly stimulated by single-stranded RNA. May be involved in pre-mRNA splicing.

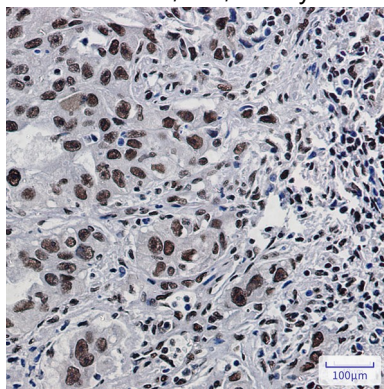
## Research Area

Epigenetics and Nuclear Signaling

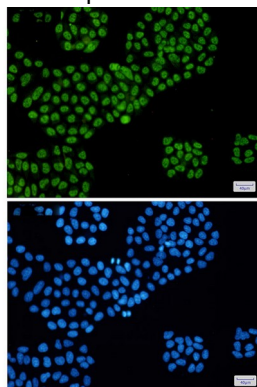
## Image Data



Western blot analysis of DDX5 in C6, 3T3, HeLa lysates using DDX5 antibody.



Immunohistochemistry analysis of paraffin-embedded Human lung cancer using DDX5 antibody. High-pressure and temperature Sodium Citrate pH 6.0 was used for antigen retrieval.



**Product Name: DDX5 Rabbit Monoclonal Antibody**  
**Catalog #: AMRe01901**



---

Immunocytochemistry analysis of DDX5 (green) in Hela using DDX5 antibody, and DAPI (blue)

**Note**

For research use only.