

**Product Name: Cyclooxygenase 2 Rabbit Monoclonal Antibody**  
**Catalog #: AMRe01846**



---

## Summary

<b>Production Name</b>	Cyclooxygenase 2 Rabbit Monoclonal Antibody
<b>Description</b>	Recombinant Rabbit Monoclonal antibody
<b>Host</b>	Rabbit
<b>Application</b>	WB,IP
<b>Reactivity</b>	Human,Mouse

## Performance

<b>Conjugation</b>	Unconjugated
<b>Modification</b>	Unmodified
<b>Isotype</b>	IgG
<b>Clonality</b>	Monoclonal Antibody
<b>Form</b>	Liquid
<b>Storage</b>	Store at 4°C short term. Aliquot and store at -20°C long term. Avoid freeze/thaw cycles.
<b>Buffer</b>	50mM Tris-Glycine(pH 7.4), 0.15M NaCl, 40% Glycerol, 0.01% Sodium azide and 0.05% BSA
<b>Purification</b>	Affinity Purified

## Immunogen

<b>Gene Name</b>	PTGS2
<b>Alternative Names</b>	COX2; COX-2; PHS-2; PGG/HS; PGHS-2; hCox-2; GRIPGHS
<b>Gene ID</b>	5743
<b>SwissProt ID</b>	P35354

## Application

<b>Dilution Ratio</b>	WB: 1/500-1/1000 IP: 1/20
<b>Molecular Weight</b>	Calculated MW: 69 kDa; Observed MW: 74 kDa

**Product Name: Cyclooxygenase 2 Rabbit Monoclonal Antibody**  
**Catalog #: AMRe01846**



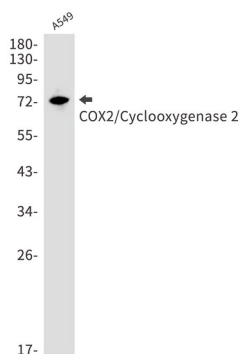
## Background

Converts arachidonate to prostaglandin H2 (PGH2), a committed step in prostanoid synthesis. Constitutively expressed in some tissues in physiological conditions, such as the endothelium, kidney and brain, and in pathological conditions, such as in cancer. PTGS2 is responsible for production of inflammatory prostaglandins. Up-regulation of PTGS2 is also associated with increased cell adhesion, phenotypic changes, resistance to apoptosis and tumor angiogenesis. In cancer cells, PTGS2 is a key step in the production of prostaglandin E2 (PGE2), which plays important roles in modulating motility, proliferation and resistance to apoptosis.

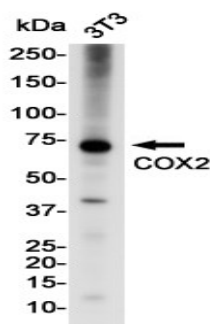
## Research Area

Cardiovascular

## Image Data



Western blot analysis of COX2/Cyclooxygenase 2 in A549 lysates using Cyclooxygenase 2 antibody.



Western blot analysis of COX2/Cyclooxygenase 2 in 3T3 lysates using COX2/Cyclooxygenase 2 antibody.

## Note

For research use only.