

---

## Summary

<b>Production Name</b>	CD166 Rabbit Monoclonal Antibody
<b>Description</b>	Recombinant Rabbit Monoclonal antibody
<b>Host</b>	Rabbit
<b>Application</b>	WB,IHC-F,IHC-P,ICC/IF,IP
<b>Reactivity</b>	Human,Mouse,Rat

## Performance

<b>Conjugation</b>	Unconjugated
<b>Modification</b>	Unmodified
<b>Isotype</b>	IgG
<b>Clonality</b>	Monoclonal Antibody
<b>Form</b>	Liquid
<b>Storage</b>	Store at 4°C short term. Aliquot and store at -20°C long term. Avoid freeze/thaw cycles.
<b>Buffer</b>	50mM Tris-Glycine(pH 7.4), 0.15M NaCl, 40% Glycerol, 0.01% Sodium azide and 0.05% BSA
<b>Purification</b>	Affinity Purified

## Immunogen

<b>Gene Name</b>	ALCAM
<b>Alternative Names</b>	ALCAM; MEMD; CD166 antigen; Activated leukocyte cell adhesion molecule; CD166
<b>Gene ID</b>	214
<b>SwissProt ID</b>	Q13740

## Application

<b>Dilution Ratio</b>	WB: 1/500-1/1000 IHC: 1/50-1/100 IF: 1/50-1/200 IP: 1/20
<b>Molecular Weight</b>	Calculated MW: 65 kDa; Observed MW: 105 kDa

## Background

---

**Product Name: CD166 Rabbit Monoclonal Antibody**  
**Catalog #: AMRe01777**

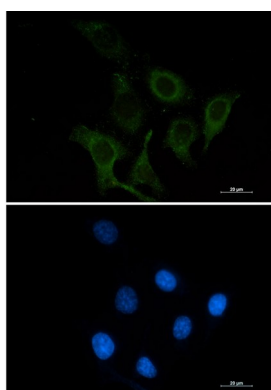


Cell adhesion molecule that binds to CD6. Involved in neurite extension by neurons via heterophilic and homophilic interactions. May play a role in the binding of T- and B-cells to activated leukocytes, as well as in interactions between cells of the nervous system.

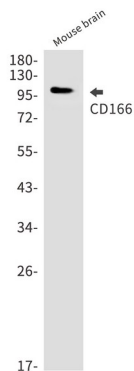
**Research Area**

Immunology

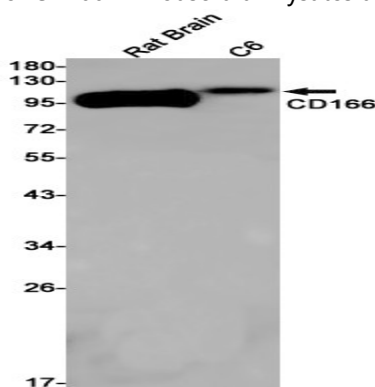
**Image Data**



Immunocytochemistry analysis of CD166 (green) in SKOV-3 using CD166 antibody, and DAPI (blue).

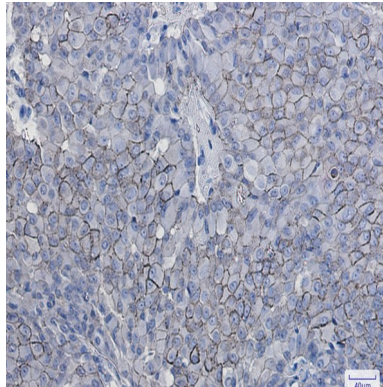


Western blot analysis of CD166 in mouse brain lysates using CD166 antibody.



Western blot analysis of CD166 in rat Brain, C6 lysates using CD166 antibody

**Product Name: CD166 Rabbit Monoclonal Antibody**  
**Catalog #: AMRe01777**



Immunohistochemistry analysis of paraffin-embedded Human breast cancer using CD166 antibody. High-pressure and temperature Sodium Citrate pH 6.0 was used for antigen retrieval.

**Note**

For research use only.