
Summary

Production Name	Caveolin 2 Rabbit Monoclonal Antibody
Description	Recombinant Rabbit Monoclonal antibody
Host	Rabbit
Application	WB,IHC-F,IHC-P,ICC/IF,IP
Reactivity	Human

Performance

Conjugation	Unconjugated
Modification	Unmodified
Isotype	IgG
Clonality	Monoclonal Antibody
Form	Liquid
Storage	Store at 4°C short term. Aliquot and store at -20°C long term. Avoid freeze/thaw cycles.
Buffer	50mM Tris-Glycine(pH 7.4), 0.15M NaCl, 40% Glycerol, 0.01% Sodium azide and 0.05% BSA
Purification	Affinity Purified

Immunogen

Gene Name	CAV2
Alternative Names	CAV2; Caveolae protein 20 Kd; Caveolin 2; Caveolin 2 isoform a and b; Caveolin-2
Gene ID	858
SwissProt ID	P51636

Application

Dilution Ratio	WB: 1/500-1/1000 IHC: 1/50-1/100 IF: 1/50-1/200 IP: 1/20
Molecular Weight	Calculated MW: 18 kDa; Observed MW: 18 kDa

Background

Product Name: Caveolin 2 Rabbit Monoclonal Antibody
Catalog #: AMRe01769

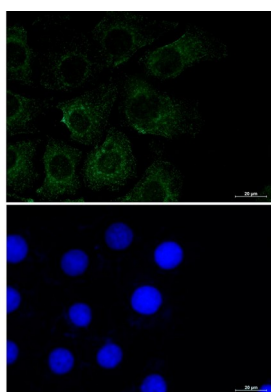


May act as a scaffolding protein within caveolar membranes. Interacts directly with G-protein alpha subunits and can functionally regulate their activity. Acts as an accessory protein in conjunction with CAV1 in targeting to lipid rafts and driving caveolae formation.

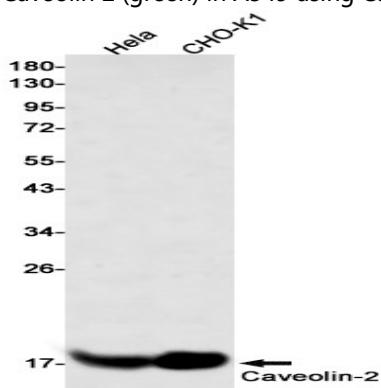
Research Area

Tags & Cell Markers

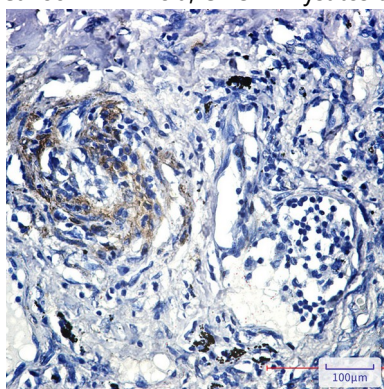
Image Data



Immunocytochemistry analysis of Caveolin 2 (green) in A549 using Caveolin 2 antibody, and DAPI (blue).



Western blot analysis of Caveolin2 in HeLa, CHO-K1 lysates using Caveolin2 antibody.



Immunohistochemistry analysis of paraffin-embedded Human lung cancer tissue using Caveolin2 antibody. High-pressure

Product Name: Caveolin 2 Rabbit Monoclonal Antibody
Catalog #: AMRe01769



and temperature Sodium Citrate pH 6.0 was used for antigen retrieval.

Note

For research use only.