

Product Name: Casein Kinase 1 alpha Rabbit Monoclonal Antibody
Catalog #: AMRe01757

Summary

Production Name	Casein Kinase 1 alpha Rabbit Monoclonal Antibody
Description	Recombinant Rabbit Monoclonal antibody
Host	Rabbit
Application	WB,IP
Reactivity	Human,Rat

Performance

Conjugation	Unconjugated
Modification	Unmodified
Isotype	IgG
Clonality	Monoclonal Antibody
Form	Liquid
Storage	Store at 4°C short term. Aliquot and store at -20°C long term. Avoid freeze/thaw cycles.
Buffer	50mM Tris-Glycine(pH 7.4), 0.15M NaCl, 40% Glycerol, 0.01% Sodium azide and 0.05% BSA
Purification	Affinity Purified

Immunogen

Gene Name	CSNK1A1
Alternative Names	CSNK1A1; Casein kinase I isoform alpha; CKI-alpha; CK1
Gene ID	1452
SwissProt ID	P48729

Application

Dilution Ratio	WB: 1/500-1/1000 IP: 1/20
Molecular Weight	Calculated MW: 39 kDa; Observed MW: 34 kDa

Product Name: Casein Kinase 1 alpha Rabbit Monoclonal Antibody
Catalog #: AMRe01757

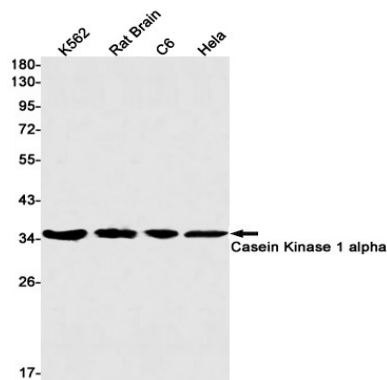
Background

Casein kinases are operationally defined by their preferential utilization of acidic proteins such as caseins as substrates. It can phosphorylate a large number of proteins. Participates in Wnt signaling. Phosphorylates CTNNB1 at 'Ser-45'. May play a role in segregating chromosomes during mitosis.

Research Area

Signal Transduction

Image Data



Western blot analysis of Casein Kinase 1 alpha in K562, rat Brain, C6, HeLa lysates using Casein Kinase 1 alpha antibody.

Note

For research use only.