

Product Name: beta III Tubulin Rabbit Monoclonal Antibody
Catalog #: AMRe01723

Summary

Production Name	beta III Tubulin Rabbit Monoclonal Antibody
Description	Recombinant Rabbit Monoclonal antibody
Host	Rabbit
Application	WB,IHC-F,IHC-P,ICC/IF,IP
Reactivity	Human,Mouse,Rat

Performance

Conjugation	Unconjugated
Modification	Unmodified
Isotype	IgG
Clonality	Monoclonal Antibody
Form	Liquid
Storage	Store at 4°C short term. Aliquot and store at -20°C long term. Avoid freeze/thaw cycles.
Buffer	50mM Tris-Glycine(pH 7.4), 0.15M NaCl, 40% Glycerol, 0.01% Sodium azide and 0.05% BSA
Purification	Affinity Purified

Immunogen

Gene Name	TUBB3
Alternative Names	TUBB3; TUBB4; Tubulin beta-3 chain; Tubulin beta-4 chain; Tubulin beta-III
Gene ID	10381
SwissProt ID	Q13509

Application

Dilution Ratio	WB: 1/500-1/1000 IHC: 1/50-1/100 IF: 1/50-1/200 IP: 1/20
Molecular Weight	Calculated MW: 50 kDa; Observed MW: 50 kDa

Product Name: beta III Tubulin Rabbit Monoclonal Antibody
Catalog #: AMRe01723



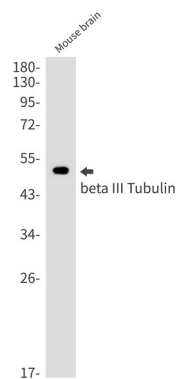
Background

TUBB3 Tubulin is the major constituent of microtubules. It binds two moles of GTP, one at an exchangeable site on the beta chain and one at a non-exchangeable site on the alpha-chain. TUBB3 plays a critical role in proper axon guidance and maintenance.

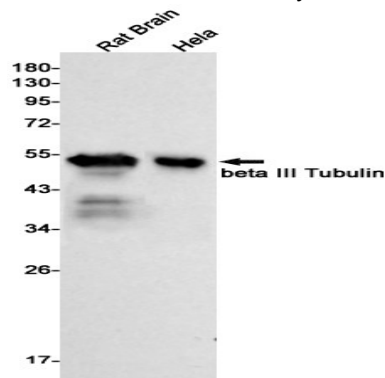
Research Area

Signal Transduction

Image Data

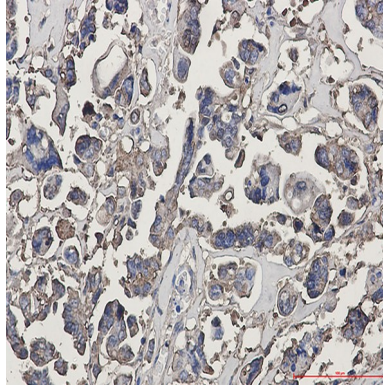


Western blot analysis of beta III Tubulin in mouse brain lysates using beta III Tubulin antibody.

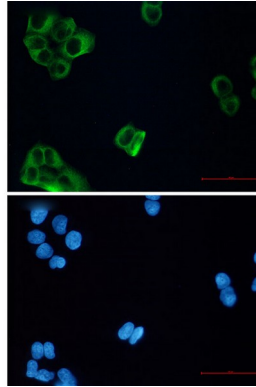


Western blot analysis of beta III Tubulin in rat Brain, HeLa lysates using beta III Tubulin antibody.

Product Name: beta III Tubulin Rabbit Monoclonal Antibody
Catalog #: AMRe01723



Immunohistochemistry analysis of paraffin-embedded Human Cholangiocarcinoma using beta III Tubulin antibody. High-pressure and temperature Sodium Citrate pH 6.0 was used for antigen retrieval.



Immunocytochemistry analysis of beta III Tubulin (green) in HeLa using beta III Tubulin antibody, and DAPI (blue).

Note

For research use only.