

Summary

Production Name	ATPB Rabbit Monoclonal Antibody
Description	Recombinant Rabbit Monoclonal antibody
Host	Rabbit
Application	WB,IHC-F,IHC-P,ICC/IF,IP
Reactivity	Human,Mouse,Rat,Monkey

Performance

Conjugation	Unconjugated
Modification	Unmodified
Isotype	IgG
Clonality	Monoclonal Antibody
Form	Liquid
Storage	Store at 4°C short term. Aliquot and store at -20°C long term. Avoid freeze/thaw cycles.
Buffer	50mM Tris-Glycine(pH 7.4), 0.15M NaCl, 40% Glycerol, 0.01% Sodium azide and 0.05% BSA
Purification	Affinity Purified

Immunogen

Gene Name	ATP5F1B
Alternative Names	ATP5B; ATPMB; ATPSB; HEL-S-271
Gene ID	506
SwissProt ID	P06576

Application

Dilution Ratio	WB: 1/500-1/1000 IHC: 1/50-1/100 IF: 1/50-1/200 IP: 1/20
Molecular Weight	Calculated MW: 57 kDa; Observed MW: 52 kDa

Background

Product Name: ATPB Rabbit Monoclonal Antibody
Catalog #: AMRe01701

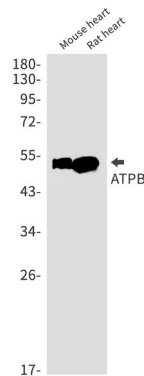


Rotation of the central stalk against the surrounding alpha(3)beta(3) subunits leads to hydrolysis of ATP in three separate catalytic sites on the beta subunits.

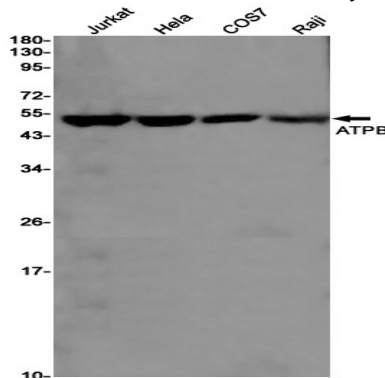
Research Area

Tags & Cell Markers

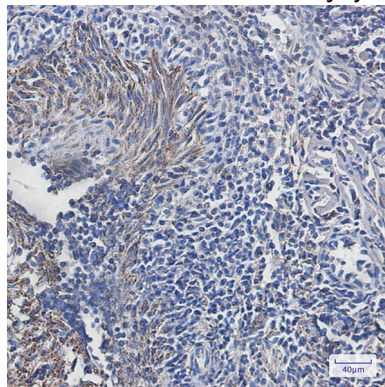
Image Data



Western blot analysis of ATPB in mouse heart, rat heart lysates using ATPB antibody.

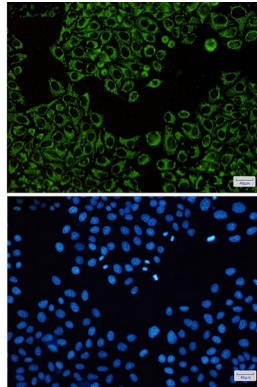


Western blot analysis of ATPB in Jurkat, HeLa, COS7, Raji lysates using ATPB antibody.



Immunohistochemistry analysis of paraffin-embedded Human tonsil using ATPB antibody. High-pressure and temperature Sodium Citrate pH 6.0 was used for antigen retrieval.

Product Name: ATPB Rabbit Monoclonal Antibody
Catalog #: AMRe01701



Immunocytochemistry analysis of ATPB(green) in HeLa using ATPB antibody, and DAPI(blue).

Note

For research use only.