

Summary

Production Name	ARPC2 Rabbit Monoclonal Antibody
Description	Recombinant Rabbit Monoclonal antibody
Host	Rabbit
Application	WB,IHC-F,IHC-P,ICC/IF,IP
Reactivity	Human,Mouse,Rat

Performance

Conjugation	Unconjugated
Modification	Unmodified
Isotype	IgG
Clonality	Monoclonal Antibody
Form	Liquid
Storage	Store at 4°C short term. Aliquot and store at -20°C long term. Avoid freeze/thaw cycles.
Buffer	50mM Tris-Glycine(pH 7.4), 0.15M NaCl, 40% Glycerol, 0.01% Sodium azide and 0.05% BSA
Purification	Affinity Purified

Immunogen

Gene Name	ARPC2
Alternative Names	ARC34; PRO2446; p34-Arc; PNAS-139
Gene ID	10109
SwissProt ID	O15144

Application

Dilution Ratio	WB: 1/500-1/1000 IHC: 1/50-1/100 IF: 1/50-1/200 IP: 1/20
Molecular Weight	Calculated MW: 34 kDa; Observed MW: 34 kDa

Background

Product Name: ARPC2 Rabbit Monoclonal Antibody
Catalog #: AMRe01677

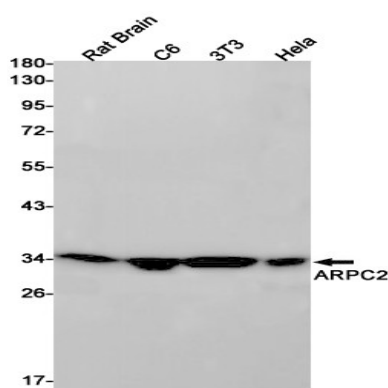


Functions as actin-binding component of the Arp2/3 complex which is involved in regulation of actin polymerization and together with an activating nucleation-promoting factor (NPF) mediates the formation of branched actin networks. Seems to contact the mother actin filament.

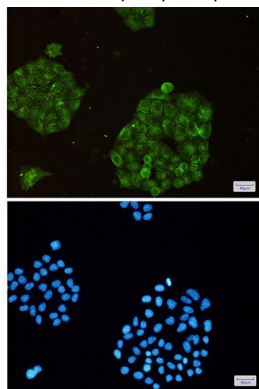
Research Area

Signal Transduction

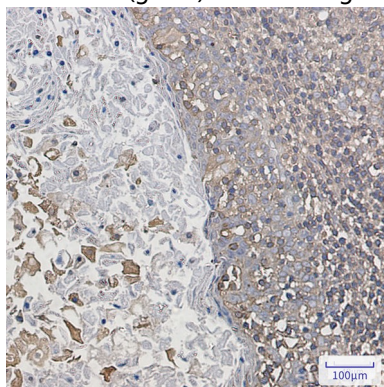
Image Data



Western blot analysis of ARPC2 in rat Brain, C6, 3T3, HeLa lysates using ARPC2 antibody.



Immunocytochemistry analysis of ARPC2(green) in HeLa using ARPC2 antibody, and DAPI(blue)



Immunohistochemistry analysis of paraffin-embedded Human tonsil using ARPC2 antibody. High-pressure and temperature

Product Name: ARPC2 Rabbit Monoclonal Antibody
Catalog #: AMRe01677



Sodium Citrate pH 6.0 was used for antigen retrieval.

Note

For research use only.