

**Product Name: Angiotensin Converting Enzyme 1 Rabbit
Monoclonal Antibody
Catalog #: AMRe01647**

Summary

Production Name	Angiotensin Converting Enzyme 1 Rabbit Monoclonal Antibody
Description	Recombinant Rabbit Monoclonal antibody
Host	Rabbit
Application	WB,IHC-P
Reactivity	Mouse,Rat

Performance

Conjugation	Unconjugated
Modification	Unmodified
Isotype	IgG
Clonality	Monoclonal Antibody
Form	Liquid
Storage	Store at 4°C short term. Aliquot and store at -20°C long term. Avoid freeze/thaw cycles.
Buffer	50mM Tris-Glycine(pH 7.4), 0.15M NaCl, 40% Glycerol, 0.01% Sodium azide and 0.05% BSA
Purification	Affinity Purified

Immunogen

Gene Name	Ace
Alternative Names	ACE; Dipeptidyl carboxypeptidase I; Kininase II
Gene ID	11421.0
SwissProt ID	P09470

Application

Dilution Ratio	WB: 1/500-1/1000 IHC: 1/50-1/100
Molecular Weight	Calculated MW: 151 kDa; Observed MW: 180 kDa

**Product Name: Angiotensin Converting Enzyme 1 Rabbit
Monoclonal Antibody
Catalog #: AMRe01647**

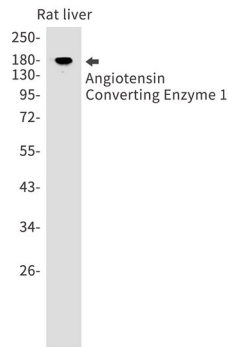
Background

Converts angiotensin I to angiotensin II by release of the terminal His-Leu, this results in an increase of the vasoconstrictor activity of angiotensin. Also able to inactivate bradykinin, a potent vasodilator. Has also a glycosidase activity which releases GPI-anchored proteins from the membrane by cleaving the mannose linkage in the GPI moiety. This GPIase activity seems to be crucial for the egg-binding ability of the sperm.

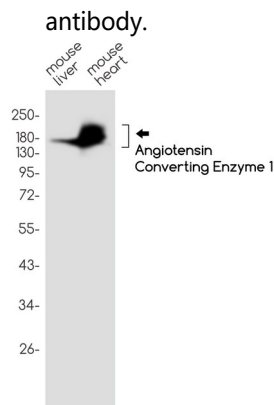
Research Area

Cardiovascular

Image Data



Western blot analysis of Angiotensin Converting Enzyme 1 in rat liver lysates using Angiotensin Converting Enzyme 1 antibody.



Western blot analysis of Angiotensin Converting Enzyme 1 in mouse liver, mouse heart lysates using Angiotensin Converting Enzyme 1 antibody.

Note

For research use only.