

Product Name: alpha Sarcoglycan Rabbit Monoclonal Antibody
Catalog #: AMRe01638

Summary

Production Name	alpha Sarcoglycan Rabbit Monoclonal Antibody
Description	Recombinant Rabbit Monoclonal antibody
Host	Rabbit
Application	WB,IHC-P,IP
Reactivity	Human,Mouse,Rat

Performance

Conjugation	Unconjugated
Modification	Unmodified
Isotype	IgG
Clonality	Monoclonal Antibody
Form	Liquid
Storage	Store at 4°C short term. Aliquot and store at -20°C long term. Avoid freeze/thaw cycles.
Buffer	50mM Tris-Glycine(pH 7.4), 0.15M NaCl, 40% Glycerol, 0.01% Sodium azide and 0.05% BSA
Purification	Affinity Purified

Immunogen

Gene Name	SGCA
Alternative Names	SGCA; ADL; DAG2; Alpha-sarcoglycan; Alpha-SG; 50 kDa dystrophin-associated glycoprotein; 50DAG; Adhalin; Dystroglycan-2
Gene ID	6442
SwissProt ID	Q16586

Application

Dilution Ratio	WB: 1/500-1/1000 IHC: 1/50-1/100 IP: 1/20
Molecular Weight	Calculated MW: 43 kDa; Observed MW: 50 kDa

Product Name: alpha Sarcoglycan Rabbit Monoclonal Antibody
Catalog #: AMRe01638



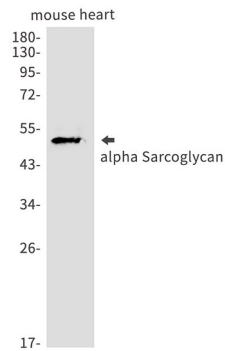
Background

Component of the sarcoglycan complex, a subcomplex of the dystrophin-glycoprotein complex which forms a link between the F-actin cytoskeleton and the extracellular matrix.

Research Area

Signal Transduction

Image Data



Western blot analysis of alpha Sarcoglycan in mouse heart lysates using alpha Sarcoglycan antibody.

Note

For research use only.