
Summary

Production Name	ALAS2 Rabbit Monoclonal Antibody
Description	Recombinant Rabbit Monoclonal antibody
Host	Rabbit
Application	WB,IP
Reactivity	Human,Mouse,Rat

Performance

Conjugation	Unconjugated
Modification	Unmodified
Isotype	IgG
Clonality	Monoclonal Antibody
Form	Liquid
Storage	Store at 4°C short term. Aliquot and store at -20°C long term. Avoid freeze/thaw cycles.
Buffer	50mM Tris-Glycine(pH 7.4), 0.15M NaCl, 40% Glycerol, 0.01% Sodium azide and 0.05% BSA
Purification	Affinity Purified

Immunogen

Gene Name	ALAS2
Alternative Names	ASB; ANH1; XLSA; ALASE; XLDPP; XLEPP; ALAS-E; SIDBA1
Gene ID	212
SwissProt ID	P22557

Application

Dilution Ratio	WB: 1/500-1/1000 IP: 1/20
Molecular Weight	Calculated MW: 65 kDa; Observed MW: 65 kDa

Background

Product Name: ALAS2 Rabbit Monoclonal Antibody
Catalog #: AMRe01623

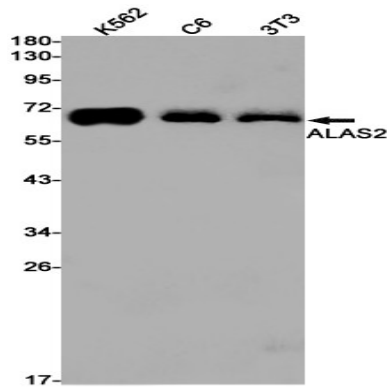


Miscellaneous There are two delta-ALA synthases in vertebrates: an erythroid- specific form and one (housekeeping) which is expressed in all tissues.

Research Area

Cardiovascular

Image Data



Western blot analysis of ALAS2 in K562, C6, 3T3 lysates using ALAS2 antibody.

Note

For research use only.