

**Product Name: alpha Skeletal Muscle Actin Rabbit
Monoclonal Antibody
Catalog #: AMRe01606**

Summary

| | |
|------------------------|--|
| Production Name | alpha Skeletal Muscle Actin Rabbit Monoclonal Antibody |
| Description | Recombinant Rabbit Monoclonal antibody |
| Host | Rabbit |
| Application | WB,IP |
| Reactivity | Human,Mouse,Rat |

Performance

| | |
|---------------------|--|
| Conjugation | Unconjugated |
| Modification | Unmodified |
| Isotype | IgG |
| Clonality | Monoclonal Antibody |
| Form | Liquid |
| Storage | Store at 4°C short term. Aliquot and store at -20°C long term. Avoid freeze/thaw cycles. |
| Buffer | 50mM Tris-Glycine(pH 7.4), 0.15M NaCl, 40% Glycerol, 0.01% Sodium azide and 0.05% BSA |
| Purification | Affinity Purified |

Immunogen

| | |
|--------------------------|--|
| Gene Name | ACTA1 |
| Alternative Names | ACTA1; ACTA; Actin; alpha skeletal muscle; Alpha-actin-1 |
| Gene ID | 58 |
| SwissProt ID | P68133 |

Application

| | |
|-------------------------|--|
| Dilution Ratio | WB: 1/500-1/1000 IP: 1/20 |
| Molecular Weight | Calculated MW: 42 kDa; Observed MW: 42 kDa |

**Product Name: alpha Skeletal Muscle Actin Rabbit
Monoclonal Antibody
Catalog #: AMRe01606**

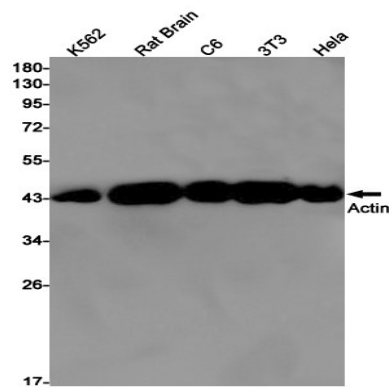
Background

Actins are highly conserved proteins that are involved in various types of cell motility and are ubiquitously expressed in all eukaryotic cells.

Research Area

Signal Transduction

Image Data



Western blot analysis of Actin in K562, rat Brain, C6, 3T3, HeLa lysates using alpha Skeletal Muscle Actin antibody.

Note

For research use only.