

## Summary

<b>Production Name</b>	Annexin VI Rabbit Monoclonal Antibody
<b>Description</b>	Recombinant Rabbit Monoclonal antibody
<b>Host</b>	Rabbit
<b>Application</b>	WB,IHC-F,IHC-P,ICC/IF,IP
<b>Reactivity</b>	Human,Rat

## Performance

<b>Conjugation</b>	Unconjugated
<b>Modification</b>	Unmodified
<b>Isotype</b>	IgG
<b>Clonality</b>	Monoclonal Antibody
<b>Form</b>	Liquid
<b>Storage</b>	Store at 4°C short term. Aliquot and store at -20°C long term. Avoid freeze/thaw cycles.
<b>Buffer</b>	50mM Tris-Glycine(pH 7.4), 0.15M NaCl, 40% Glycerol, 0.01% Sodium azide and 0.05% BSA
<b>Purification</b>	Affinity Purified

## Immunogen

<b>Gene Name</b>	ANXA6
<b>Alternative Names</b>	p68; p70; ANX6; CBP68; CPB-II
<b>Gene ID</b>	309
<b>SwissProt ID</b>	P08133

## Application

<b>Dilution Ratio</b>	WB: 1/500-1/1000 IHC: 1/50-1/100 IF: 1/50-1/200 IP: 1/20
<b>Molecular Weight</b>	Calculated MW: 76 kDa; Observed MW: 70 kDa

## Background

**Product Name: Annexin VI Rabbit Monoclonal Antibody**  
**Catalog #: AMRe01445**

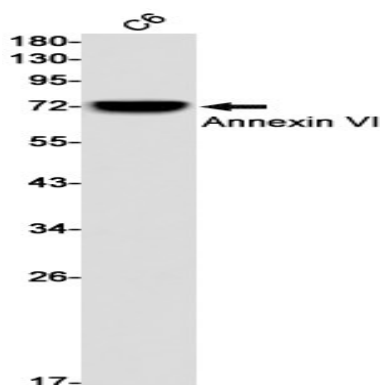


May associate with CD21. May regulate the release of Ca<sup>2+</sup> from intracellular stores. Miscellaneous Seems to bind one calcium ion with high affinity.

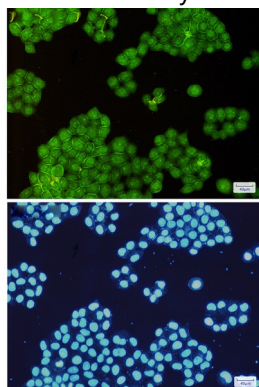
## Research Area

Cell Biology

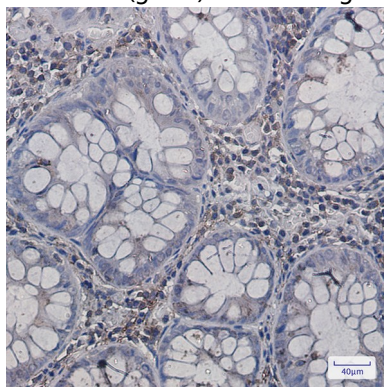
## Image Data



Western blot analysis of Annexin VI in C6 lysates using Annexin VI antibody.



Immunocytochemistry analysis of Annexin VI (green) in HeLa using Annexin VI antibody, and DAPI (blue)



Immunohistochemistry analysis of paraffin-embedded Human colon cancer using Annexin VI antibody. High-pressure and temperature Sodium Citrate pH 6.0 was used for antigen retrieval.

**Product Name: Annexin VI Rabbit Monoclonal Antibody**  
**Catalog #: AMRe01445**

---



**Note**

For research use only.