
Summary

Production Name	E Cadherin Rabbit Monoclonal Antibody
Description	Recombinant Rabbit Monoclonal antibody
Host	Rabbit
Application	WB,IHC-F,IHC-P,ICC/IF,IP
Reactivity	Human

Performance

Conjugation	Unconjugated
Modification	Unmodified
Isotype	IgG
Clonality	Monoclonal Antibody
Form	Liquid
Storage	Store at 4°C short term. Aliquot and store at -20°C long term. Avoid freeze/thaw cycles.
Buffer	50mM Tris-Glycine(pH 7.4), 0.15M NaCl, 40% Glycerol, 0.01% Sodium azide and 0.05% BSA
Purification	Affinity Purified

Immunogen

Gene Name	CDH1
Alternative Names	CDH1; CDHE; UVO; Cadherin-1; CAM 120/80; Epithelial cadherin; E-cadherin; Uvomorulin; CD antigen CD324
Gene ID	999
SwissProt ID	P12830

Application

Dilution Ratio	WB: 1/500-1/1000 IHC: 1/50-1/100 IF: 1/50-1/200 IP: 1/20
Molecular Weight	Calculated MW: 97 kDa; Observed MW: 80-120,135 kDa

Product Name: E Cadherin Rabbit Monoclonal Antibody
Catalog #: AMRe01411



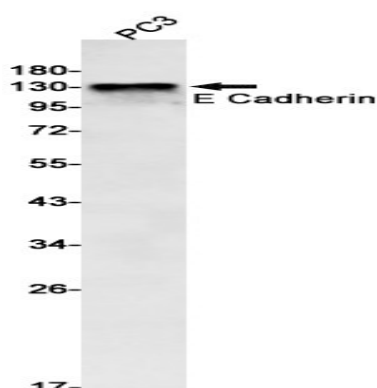
Background

CDH1 a single-pass type I membrane protein, and calcium dependent cell adhesion proteins. It is a ligand for integrin alpha-E/beta-7, and it colocalizes with DLG7 at sites of cell-cell contact in intestinal epithelial cells.

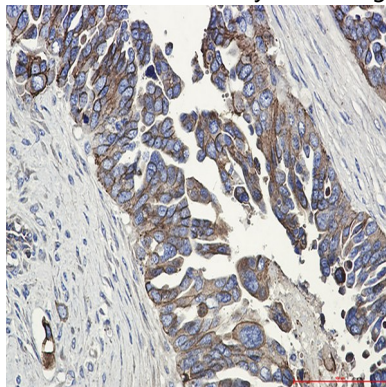
Research Area

Signal Transduction

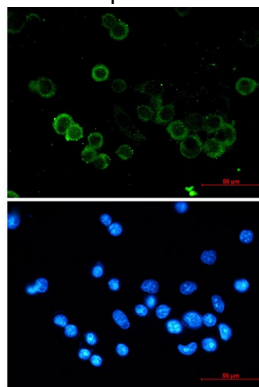
Image Data



Western blot analysis of E Cadherin in PC-3 lysates using E Cadherin antibody.



Immunohistochemistry analysis of paraffin-embedded Human Cholangiocarcinoma using E Cadherin antibody. High-pressure and temperature Sodium Citrate pH 6.0 was used for antigen retrieval.



Product Name: E Cadherin Rabbit Monoclonal Antibody
Catalog #: AMRe01411



Immunocytochemistry analysis of E Cadherin (green) in MCF-7 using E Cadherin antibody, and DAPI (blue)

Note

For research use only.