

**Product Name: Cytochrome C (7C10) Mouse Monoclonal Antibody**  
**Catalog #: AMM03876**

---

## Summary

<b>Production Name</b>	Cytochrome C (7C10) Mouse Monoclonal Antibody
<b>Description</b>	Primary antibody
<b>Host</b>	Mouse
<b>Application</b>	WB,IHC-F,IHC-P,ICC/IF
<b>Reactivity</b>	Human,Mouse,Rat,Chicken

## Performance

<b>Conjugation</b>	Unconjugated
<b>Modification</b>	Unmodified
<b>Isotype</b>	IgG1
<b>Clonality</b>	Monoclonal Antibody
<b>Form</b>	Liquid
<b>Storage</b>	Store at 4°C short term. Aliquot and store at -20°C long term. Avoid freeze/thaw cycles.
<b>Buffer</b>	Liquid in PBS containing 50% glycerol, 0.5% BSA and 0.02% sodium azide, pH 7.3.
<b>Purification</b>	Affinity Purified

## Immunogen

<b>Gene Name</b>	CYCS
<b>Alternative Names</b>	CYCS; CYC; Cytochrome c
<b>Gene ID</b>	54205
<b>SwissProt ID</b>	P99999

## Application

<b>Dilution Ratio</b>	WB: 1/500-1/1000 IHC: 1/50-1/100 IF: 1/50-1/200
<b>Molecular Weight</b>	Calculated MW: 12 kDa; Observed MW: 12 kDa

## Background

---

**Product Name: Cytochrome C (7C10) Mouse Monoclonal Antibody**  
**Catalog #: AMM03876**

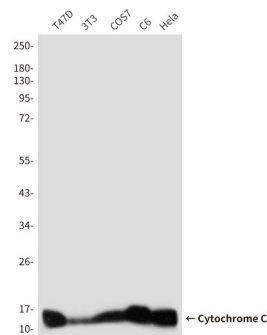


CYCS Electron carrier protein. The oxidized form of the cytochrome c heme group can accept an electron from the heme group of the cytochrome c1 subunit of cytochrome reductase. Cytochrome c then transfers this electron to the cytochrome oxidase complex, the final protein carrier in the mitochondrial electron-transport chain.

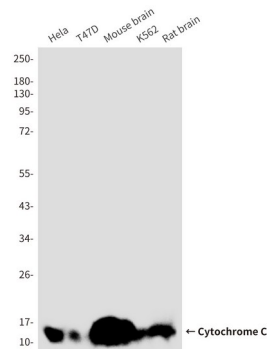
## Research Area

Cardiovascular

## Image Data

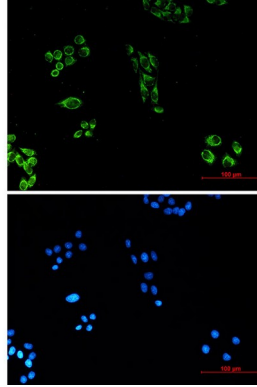


Western blot analysis of Cytochrome c in T47D, 3T3, COS7, C6 and HeLa lysates using Cytochrome c antibody.

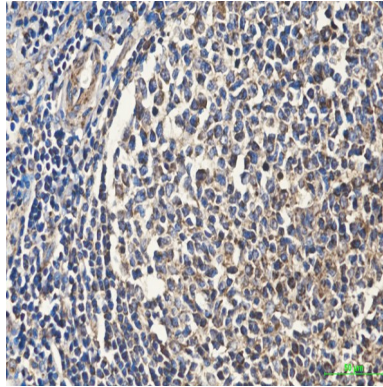


Western blot analysis of Cytochrome C (7C10) in HeLa, T47D, mouse brain, K562, rat brain lysates using Cytochrome C (7C10) antibody.

**Product Name: Cytochrome C (7C10) Mouse Monoclonal Antibody**  
**Catalog #: AMM03876**



Immunocytochemistry analysis of Cytochrome C (7C1) (green) in HeLa using Cytochrome C (7C1) antibody ,and DAPI(blue)



Immunohistochemistry analysis of paraffin-embedded human tonsil tissue using Cytochrome C (7C10) antibody. High-pressure and temperature Sodium Citrate pH 6.0 was used for antigen retrieval.

## **Note**

For research use only.