

Summary

Production Name	LYRIC (2E4) Mouse Monoclonal Antibody
Description	Primary antibody
Host	Mouse
Application	WB,IHC-P,FC
Reactivity	Human

Performance

Conjugation	Unconjugated
Modification	Unmodified
Isotype	IgG1
Clonality	Monoclonal Antibody
Form	Liquid
Storage	Store at 4°C short term. Aliquot and store at -20°C long term. Avoid freeze/thaw cycles.
Buffer	Liquid in PBS containing 50% glycerol, 0.5% BSA and 0.02% sodium azide, pH 7.3.
Purification	Ascitic Fluid

Immunogen

Gene Name	MTDH MTDH; AEG1; LYRIC; Protein LYRIC; 3D3/LYRIC; Astrocyte elevated gene-1 protein;
Alternative Names	AEG-1; Lysine-rich CEACAM1 co-isolated protein; Metadherin; Metastasis adhesion protein
Gene ID	92140
SwissProt ID	Q86UE4

Application

Dilution Ratio	WB: 1/500-1/1000 IHC: 1/50-1/100 FC: 1/50-1/100
Molecular Weight	Calculated MW: 64 kDa; Observed MW: 64 kDa

Product Name: LYRIC (2E4) Mouse Monoclonal Antibody
Catalog #: AMM03572



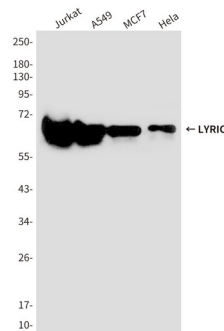
Background

Downregulates SLC1A2/EAAT2 promoter activity when expressed ectopically. Activates the nuclear factor kappa-B (NF-kappa-B) transcription factor. Promotes anchorage-independent growth of immortalized melanocytes and astrocytes which is a key component in tumor cell expansion.

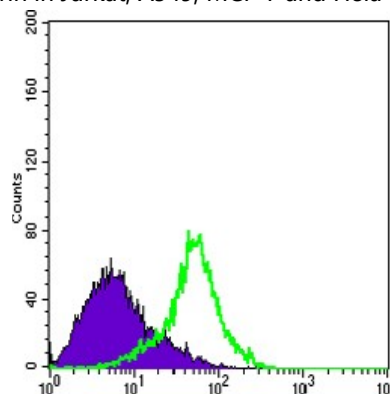
Research Area

Signal Transduction

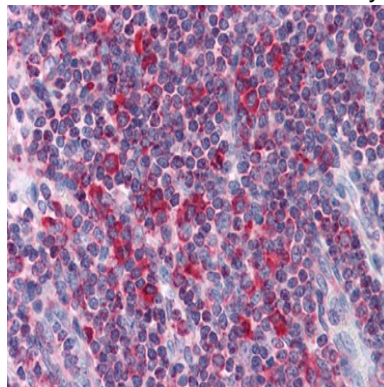
Image Data



Western blot analysis of Lyric/Metadherin in Jurkat, A549, MCF-7 and HeLa lysates using Lyric/Metadherin antibody.



Flow cytometry analysis of HeLa cells stained with Metadherin antibody (green) and negative control (purple).



Product Name: LYRIC (2E4) Mouse Monoclonal Antibody
Catalog #: AMM03572



Immunohistochemistry analysis of paraffin-embedded Human Liver tissues using Metadherin antibody. High-pressure and temperature Sodium Citrate pH 6.0 was used for antigen retrieval.

Note

For research use only.