

**Product Name: RPS6 (7B10) Mouse Monoclonal Antibody**  
**Catalog #: AMM03553**

---

## Summary

<b>Production Name</b>	RPS6 (7B10) Mouse Monoclonal Antibody
<b>Description</b>	Primary antibody
<b>Host</b>	Mouse
<b>Application</b>	WB,ICC/IF,IP
<b>Reactivity</b>	Human,Mouse,Rat,Monkey

## Performance

<b>Conjugation</b>	Unconjugated
<b>Modification</b>	Unmodified
<b>Isotype</b>	IgG1
<b>Clonality</b>	Monoclonal Antibody
<b>Form</b>	Liquid
<b>Storage</b>	Store at 4°C short term. Aliquot and store at -20°C long term. Avoid freeze/thaw cycles.
<b>Buffer</b>	Liquid in PBS containing 50% glycerol, 0.5% BSA and 0.02% sodium azide, pH 7.3.
<b>Purification</b>	Affinity Purified

## Immunogen

<b>Gene Name</b>	RPS6
<b>Alternative Names</b>	RPS6; OK/SW-cl.2; 40S ribosomal protein S6; Phosphoprotein NP33
<b>Gene ID</b>	6194
<b>SwissProt ID</b>	P62753

## Application

<b>Dilution Ratio</b>	WB: 1/500-1/1000 IF: 1/50-1/200 IP: 1/20
<b>Molecular Weight</b>	Calculated MW: 29 kDa; Observed MW: 32 kDa

## Background

---

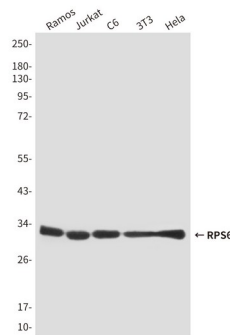
**Product Name: RPS6 (7B10) Mouse Monoclonal Antibody**  
**Catalog #: AMM03553**

May play an important role in controlling cell growth and proliferation through the selective translation of particular classes of mRNA.

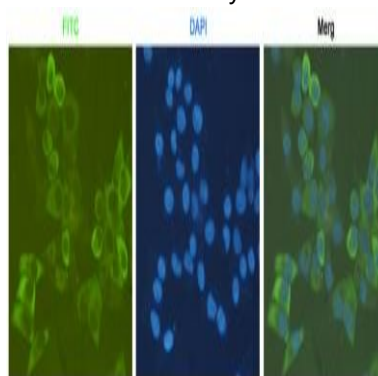
**Research Area**

Epigenetics and Nuclear Signaling

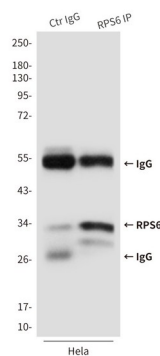
**Image Data**



Western blot analysis of S6 Ribosomal Protein in Ramos, Jurkat, C6, 3T3 and HeLa lysates using S6 Ribosomal Protein antibody.



Immunocytochemistry analysis of RPS6 (7B10) in HeLa using S6 Ribosomal Protein antibody.

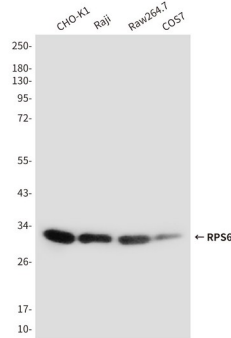


**Product Name: RPS6 (7B10) Mouse Monoclonal Antibody**  
**Catalog #: AMM03553**



---

Immunoprecipitation analysis of RPS6 (7B10) in HeLa lysates using S6 Ribosomal Protein antibody.



Western blot analysis of RPS6 (7B10) in CHO-K1, Raji, Raw264.7 and COS7 lysates using RPS6 (7B10) antibody

**Note**

For research use only.