
Summary

Production Name	SHP1 (2B7) Mouse Monoclonal Antibody
Description	Primary antibody
Host	Mouse
Application	WB,IP
Reactivity	Human

Performance

Conjugation	Unconjugated
Modification	Unmodified
Isotype	IgG2a
Clonality	Monoclonal Antibody
Form	Liquid
Storage	Store at 4°C short term. Aliquot and store at -20°C long term. Avoid freeze/thaw cycles.
Buffer	Liquid in PBS containing 50% glycerol, 0.5% BSA and 0.02% sodium azide, pH 7.3.
Purification	Affinity Purified

Immunogen

Gene Name	PTPN6
Alternative Names	PTPN6; HCP; PTP1C; Tyrosine-protein phosphatase non-receptor type 6; Hematopoietic cell protein-tyrosine phosphatase; Protein-tyrosine phosphatase 1C; PTP-1C; Protein-tyrosine phosphatase SHP-1; SH-PTP1
Gene ID	5777
SwissProt ID	P29350

Application

Dilution Ratio	WB: 1/500-1/1000 IP: 1/20
Molecular Weight	Calculated MW: 68 kDa; Observed MW: 68 kDa

Product Name: SHP1 (2B7) Mouse Monoclonal Antibody
Catalog #: AMM03544



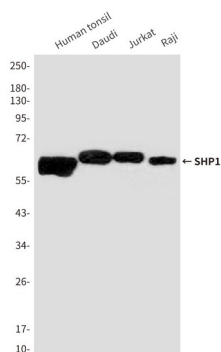
Background

The protein encoded by this gene is a member of the protein tyrosine phosphatase (PTP) family. PTPs are known to be signaling molecules that regulate a variety of cellular processes including cell growth, differentiation, mitotic cycle, and oncogenic transformation.

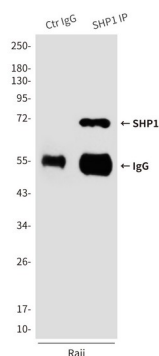
Research Area

Cell Biology

Image Data



Western blot analysis of SHP1 in Human tonsil, Daudi, Jurkat and Raji lysates using SHP1 antibody.



Immunoprecipitation analysis of SHP1 (2B7) in Raji lysates using SHP1 antibody.

Note

For research use only.