

## Summary

<b>Production Name</b>	PKM2 (1F2) Mouse Monoclonal Antibody
<b>Description</b>	Primary antibody
<b>Host</b>	Mouse
<b>Application</b>	WB,ICC/IF,IP
<b>Reactivity</b>	Human,Mouse,Monkey

## Performance

<b>Conjugation</b>	Unconjugated
<b>Modification</b>	Unmodified
<b>Isotype</b>	IgG2b
<b>Clonality</b>	Monoclonal Antibody
<b>Form</b>	Liquid
<b>Storage</b>	Store at 4°C short term. Aliquot and store at -20°C long term. Avoid freeze/thaw cycles.
<b>Buffer</b>	Liquid in PBS containing 50% glycerol, 0.02% sodium azide, pH 7.4.
<b>Purification</b>	Affinity Purified

## Immunogen

<b>Gene Name</b>	PKM PKM; OIP3; PK2; PK3; PKM2; Pyruvate kinase isozymes M1/M2; Cytosolic thyroid hormone-binding protein; CTHBP; Opa-interacting protein 3; OIP-3; Pyruvate kinase 2/3; Pyruvate kinase muscle isozyme; Thyroid hormone-binding protein 1; THBP1; Tu
<b>Alternative Names</b>	
<b>Gene ID</b>	5315
<b>SwissProt ID</b>	P14618

## Application

<b>Dilution Ratio</b>	WB: 1/500-1/1000 IF: 1/50-1/200 IP: 1/20
<b>Molecular Weight</b>	Calculated MW: 58 kDa; Observed MW: 58 kDa

**Product Name: PKM2 (1F2) Mouse Monoclonal Antibody**  
**Catalog #: AMM03471**



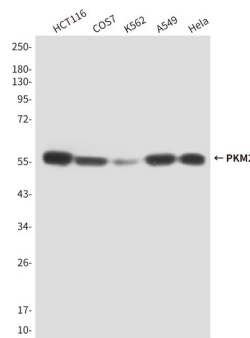
## Background

Pyruvate kinase is a glycolytic enzyme that catalyses the conversion of phosphoenolpyruvate to pyruvate. PKM2 is shown to be essential for aerobic glycolysis in tumors, known as the Warburg effect.

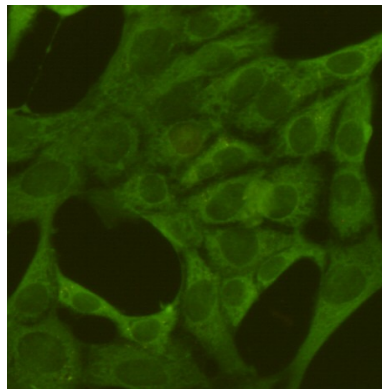
## Research Area

Signal Transduction

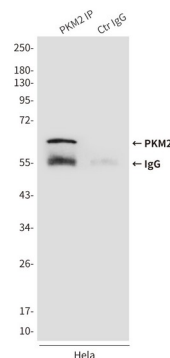
## Image Data



Western blot analysis of PKM2 in HCT116, COS7, K562, A549 and HeLa lysates using PKM2 antibody.



Immunofluorescence analysis of PKM2 (1F2) in 3T3 using PKM2 antibody.



Immunoprecipitation analysis of PKM2 (1F2) in HeLa lysates using PKM2 antibody.

**Product Name: PKM2 (1F2) Mouse Monoclonal Antibody**  
**Catalog #: AMM03471**

---



**Note**

For research use only.