

Product Name: APG5L (3C10) Mouse Monoclonal Antibody
Catalog #: AMM00895

Summary

Production Name	APG5L (3C10) Mouse Monoclonal Antibody
Description	Primary antibody
Host	Mouse
Application	WB,IHC-P
Reactivity	Human,Rat,Mouse

Performance

Conjugation	Unconjugated
Modification	Unmodified
Isotype	IgG1
Clonality	Monoclonal Antibody
Form	Liquid
Storage	Store at 4°C short term. Aliquot and store at -20°C long term. Avoid freeze/thaw cycles.
Buffer	Liquid in PBS containing 50% glycerol, 0.5% BSA and 0.02% sodium azide, pH 7.3.
Purification	Affinity Purified

Immunogen

Gene Name	ATG5
Alternative Names	APG 5L; APG5; APG5 autophagy 5 like; APG5 like; APG5-like; Apoptosis specific protein; ASP; ATG 5; ATG5 autophagy related 5 homolog; Autophagy protein 5; hAPG5
Gene ID	9474
SwissProt ID	Q9H1Y0

Application

Dilution Ratio	WB: 1/500-1/1000 IHC: 1/50-1/100
Molecular Weight	Calculated MW: 32 kDa; Observed MW: 55 kDa

Product Name: APG5L (3C10) Mouse Monoclonal Antibody
Catalog #: AMM00895

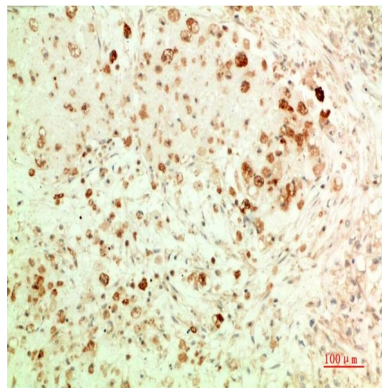
Background

Required for autophagy. Conjugates to ATG12 and associates with isolation membrane to form cup-shaped isolation membrane and autophagosome. Involved in mitochondrial quality control after oxidative damage, and in subsequent cellular longevity.

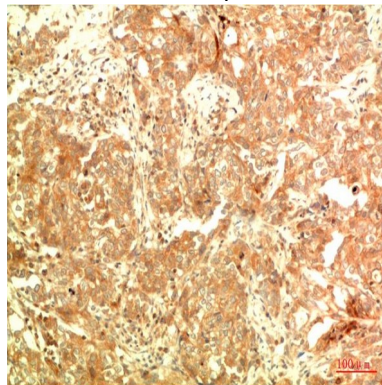
Research Area

Cell Biology

Image Data

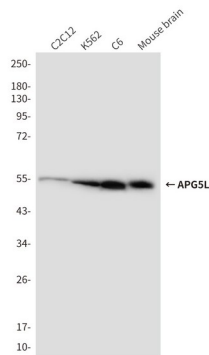


Immunohistochemistry analysis of paraffin-embedded Human Ovarian Carcinoma Tissue using APG5L (3C10) antibody. High-pressure and temperature Sodium Citrate pH 6.0 was used for antigen retrieval.



Immunohistochemical analysis of paraffin-embedded Human tonsils using APG5L (3C10) antibody. High-pressure and temperature Sodium Citrate pH 6.0 was used for antigen retrieval.

Product Name: APG5L (3C10) Mouse Monoclonal Antibody
Catalog #: AMM00895



Western blot analysis of APG5L (3C10) in C2C12, K562, C6, mouse brain lysates using APG5L (3C10) antibody

Note

For research use only.