

**Product Name: alpha Tubulin (Zebrafish Specific) (4C7)  
Mouse Monoclonal Antibody  
Catalog #: AMM00883**

---

## Summary

<b>Production Name</b>	alpha Tubulin (Zebrafish Specific) (4C7) Mouse Monoclonal Antibody
<b>Description</b>	Primary antibody
<b>Host</b>	Mouse
<b>Application</b>	WB
<b>Reactivity</b>	Zebrafish

## Performance

<b>Conjugation</b>	Unconjugated
<b>Modification</b>	Unmodified
<b>Isotype</b>	IgG1
<b>Clonality</b>	Monoclonal Antibody
<b>Form</b>	Liquid
<b>Storage</b>	Store at 4°C short term. Aliquot and store at -20°C long term. Avoid freeze/thaw cycles.
<b>Buffer</b>	Liquid in PBS containing 50% glycerol, 0.5% BSA and 0.02% sodium azide, pH 7.3.
<b>Purification</b>	Affinity Purified

## Immunogen

<b>Gene Name</b>	TUBA1B
<b>Alternative Names</b>	Tubulin alpha-1B chain; Alpha-tubulin ubiquitous; Tubulin K-alpha-1; Tubulin alpha-ubiquitous chain
<b>Gene ID</b>	10376
<b>SwissProt ID</b>	P68363

## Application

<b>Dilution Ratio</b>	WB: 1/500-1/1000
<b>Molecular Weight</b>	Calculated MW: 50 kDa; Observed MW: 50 kDa

**Product Name: alpha Tubulin (Zebrafish Specific) (4C7)  
Mouse Monoclonal Antibody  
Catalog #: AMM00883**



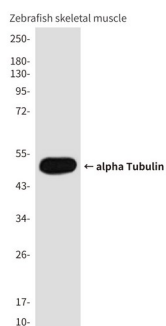
## Background

TUBA1A Tubulin is the major constituent of microtubules. It binds two moles of GTP, one at an exchangeable site on the beta chain and one at a non-exchangeable site on the alpha-chain.

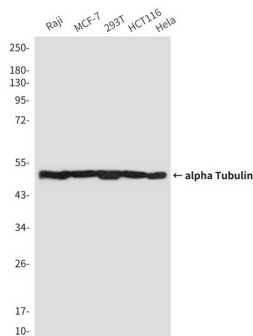
## Research Area

Signal Transduction

## Image Data



Western blot analysis of alpha Tubulin in Zebrafish skeletal muscle(Zebrafish Specific) using alpha Tubulin antibody.



Western blot analysis of alpha Tubulin (Zebrafish Specific) (4C7) in Raji, MCF-7, 293T, HCT116, HeLa lysates using  $\alpha$ Tubulin (Zebrafish Specific) (4C7) antibody.

## Note

For research use only.