

**Product Name: alpha Lactalbumin (10B3) Mouse  
Monoclonal Antibody  
Catalog #: AMM00867**

---

## Summary

<b>Production Name</b>	alpha Lactalbumin (10B3) Mouse Monoclonal Antibody
<b>Description</b>	Primary antibody
<b>Host</b>	Mouse
<b>Application</b>	WB,IHC-P,ICC/IF
<b>Reactivity</b>	Human

## Performance

<b>Conjugation</b>	Unconjugated
<b>Modification</b>	Unmodified
<b>Isotype</b>	IgG1
<b>Clonality</b>	Monoclonal Antibody
<b>Form</b>	Liquid
<b>Storage</b>	Store at 4°C short term. Aliquot and store at -20°C long term. Avoid freeze/thaw cycles.
<b>Buffer</b>	Liquid in PBS containing 50% glycerol, 0.5% BSA and 0.02% sodium azide, pH 7.3.
<b>Purification</b>	Affinity Purified

## Immunogen

<b>Gene Name</b>	LALBA
<b>Alternative Names</b>	Lactose synthase B protein; Alpha-lactalbumin; Lactalbumin alpha; MGC138521
<b>Gene ID</b>	3906
<b>SwissProt ID</b>	P00709

## Application

<b>Dilution Ratio</b>	WB: 1/500-1/1000 IHC: 1/50-1/100 IF: 1/50-1/200
<b>Molecular Weight</b>	Calculated MW: 16 kDa; Observed MW: 16 kDa

## Background

---

**Product Name: alpha Lactalbumin (10B3) Mouse  
Monoclonal Antibody  
Catalog #: AMM00867**

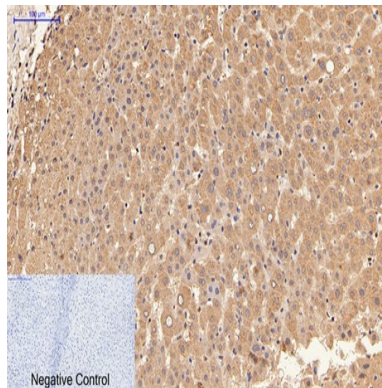
---

Regulatory subunit of lactose synthase, changes the substrate specificity of galactosyltransferase in the mammary gland making glucose a good acceptor substrate for this enzyme. This enables LS to synthesize lactose, the major carbohydrate component of milk. In other tissues, galactosyltransferase transfers galactose onto the N-acetylglucosamine of the oligosaccharide chains in glycoproteins.

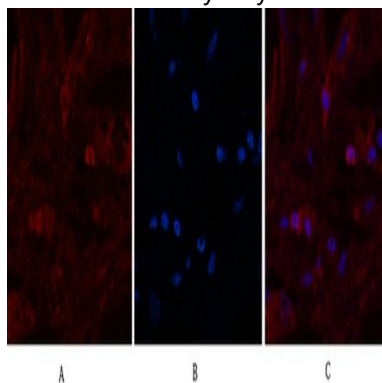
## Research Area

Tags & Cell Markers

## Image Data



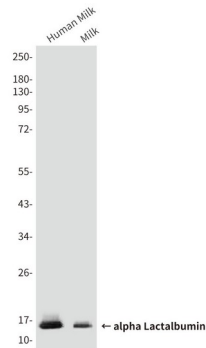
Immunohistochemistry analysis of paraffin-embedded Human liver tissue using alpha Lactalbumin (10B3) antibody. High-pressure and temperature Sodium Citrate pH 6.0 was used for antigen retrieval. Negative control was used by secondary antibody only.



Immunofluorescence analysis of alpha Lactalbumin (10B3) in Human breast tissue using alpha Lactalbumin antibody (red), and DAPI (blue).

**Product Name: alpha Lactalbumin (10B3) Mouse  
Monoclonal Antibody  
Catalog #: AMM00867**

---



Western blot analysis of alpha Lactalbumin (10B3) in Human Milk, Milk, lysates using alpha Lactalbumin (10B3) antibody

### **Note**

For research use only.