

**Product Name: TGF beta 1 (8F6) Mouse Monoclonal Antibody**  
**Catalog #: AMM00661**

---

## Summary

<b>Production Name</b>	TGF beta 1 (8F6) Mouse Monoclonal Antibody
<b>Description</b>	Primary antibody
<b>Host</b>	Mouse
<b>Application</b>	WB,IHC-P
<b>Reactivity</b>	Human,Rat,Mouse

## Performance

<b>Conjugation</b>	Unconjugated
<b>Modification</b>	Unmodified
<b>Isotype</b>	IgG1
<b>Clonality</b>	Monoclonal Antibody
<b>Form</b>	Liquid
<b>Storage</b>	Store at 4°C short term. Aliquot and store at -20°C long term. Avoid freeze/thaw cycles.
<b>Buffer</b>	Liquid in PBS containing 50% glycerol, 0.5% BSA and 0.02% sodium azide, pH 7.3.
<b>Purification</b>	Affinity Purified

## Immunogen

<b>Gene Name</b>	TGFB1
<b>Alternative Names</b>	TGF beta 1; TGFB; CED; LAP
<b>Gene ID</b>	7040
<b>SwissProt ID</b>	P01137

## Application

<b>Dilution Ratio</b>	WB: 1/500-1/1000 IHC: 1/50-1/100
<b>Molecular Weight</b>	Calculated MW: 44 kDa; Observed MW: 12,25,45-65 kDa

## Background

---

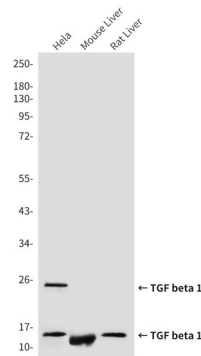
**Product Name: TGF beta 1 (8F6) Mouse Monoclonal Antibody**  
**Catalog #: AMM00661**

Multifunctional protein that controls proliferation, differentiation and other functions in many cell types. Many cells synthesize TGFβ1 and have specific receptors for it. It positively and negatively regulates many other growth factors. It plays an important role in bone remodeling as it is a potent stimulator of osteoblastic bone formation, causing chemotaxis, proliferation and differentiation in committed osteoblasts.

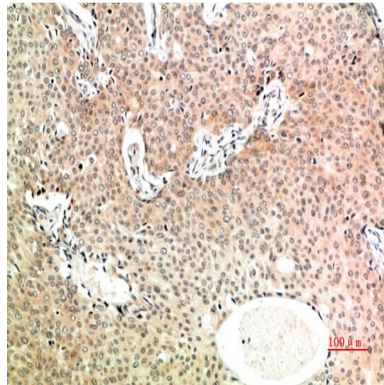
## Research Area

Cardiovascular

## Image Data



Western blot analysis of TGF beta 1 (8F6) in HeLa lysates, mouse Liver lysates, rat Liver lysates using TGF&beta 1 antibody.



Immunohistochemistry analysis of paraffin-embedded Human Breast Carcinoma Tissue using TGF beta 1 (8F6) antibody. High-pressure and temperature Sodium Citrate pH 6.0 was used for antigen retrieval.

**Product Name: TGF beta 1 (8F6) Mouse Monoclonal Antibody**  
**Catalog #: AMM00661**



Immunohistochemistry analysis of paraffin-embedded Human Placental Tissue using TGF beta 1 (8F6) antibody. High-pressure and temperature Sodium Citrate pH 6.0 was used for antigen retrieval.

**Note**

For research use only.