

**Product Name: Mouse anti-Channel Catfish IgM Heavy chain Monoclonal Antibody**  
**Catalog #: AMM40010**

---

## Summary

<b>Production Name</b>	Mouse anti-Channel Catfish IgM Heavy chain Monoclonal Antibody
<b>Host</b>	Mouse
<b>Application</b>	ELISA, WB, FC
<b>Reactivity</b>	Channel Catfish

## Performance

<b>Conjugation</b>	Unconjugation
<b>Modification</b>	Unmodification
<b>Isotype</b>	IgG1
<b>Clonality</b>	Monoclonal
<b>Form</b>	Liquid
<b>Storage</b>	Store at -20°C. Stable for one year after shipment.
<b>Buffer</b>	1×PBS, 50% glycerin, 3 mg/mL BSA, pH 7.4.

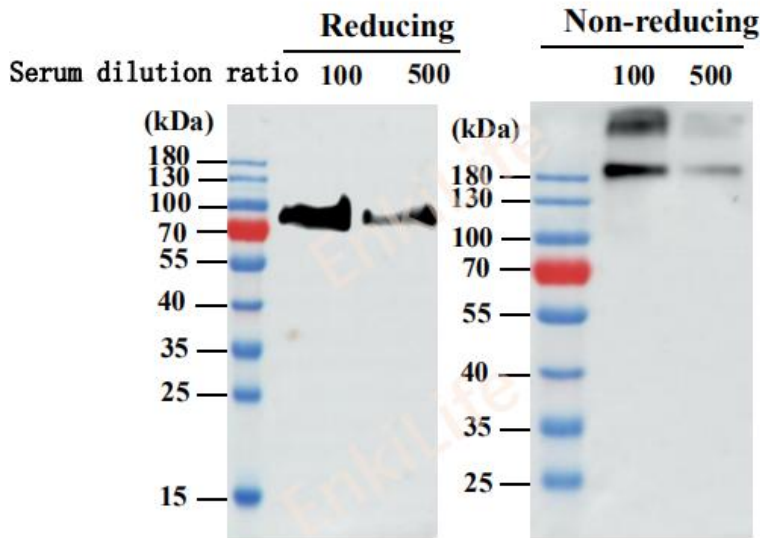
## Application

<b>Recommended concentration</b>	ELISA/WB:1:1000 ;FC:1:500
----------------------------------	---------------------------

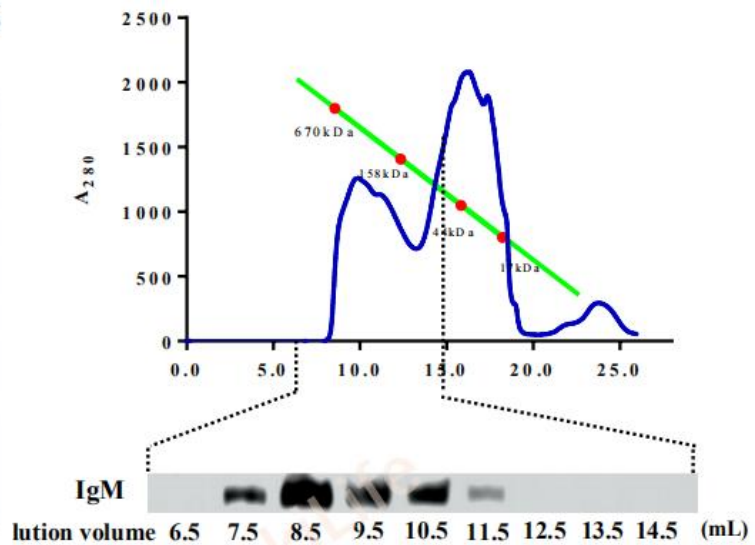
**Product Name: Mouse anti-Channel Catfish IgM Heavy chain Monoclonal Antibody**  
**Catalog #: AMM40010**

**Selected Validation Data**

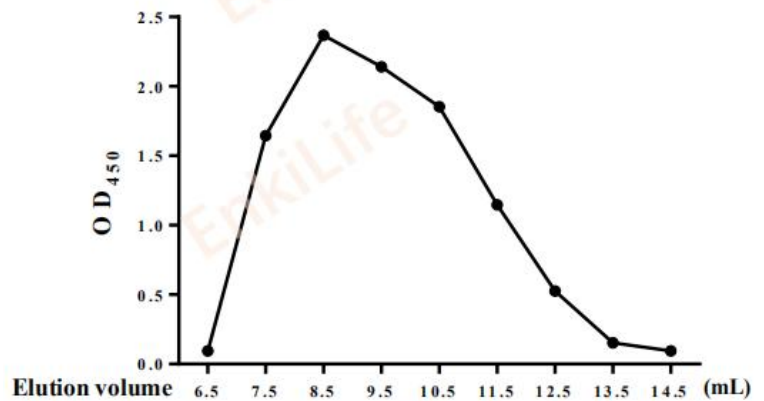
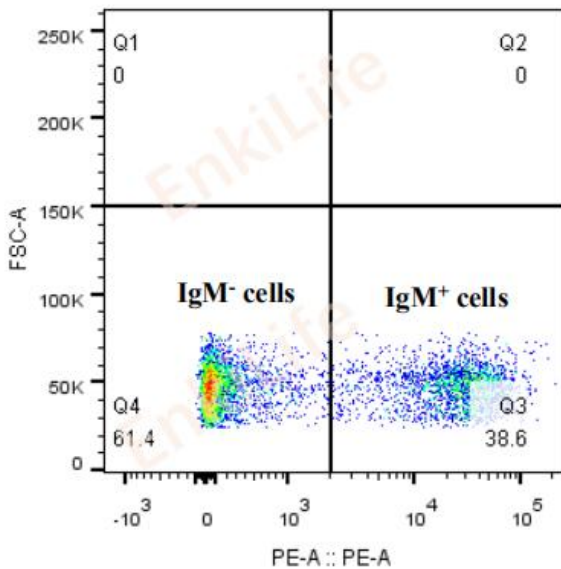
WB



ELISA



FC



**Note**

For research use only.