

**Product Name: Mouse anti-Goldfish IgM Heavy chain
Monoclonal Antibody
Catalog #: AMM40009**

Summary

Production Name	Mouse anti-Goldfish IgM Heavy chain Monoclonal Antibody
Host	Mouse
Application	ELISA, WB, FC
Reactivity	Goldfish

Performance

Conjugation	Unconjugation
Modification	Unmodification
Isotype	IgG1
Clonality	Monoclonal
Form	Liquid
Storage	Store at -20°C. Stable for one year after shipment.
Buffer	1×PBS, 50% glycerin, 3 mg/mL BSA, pH 7.4.

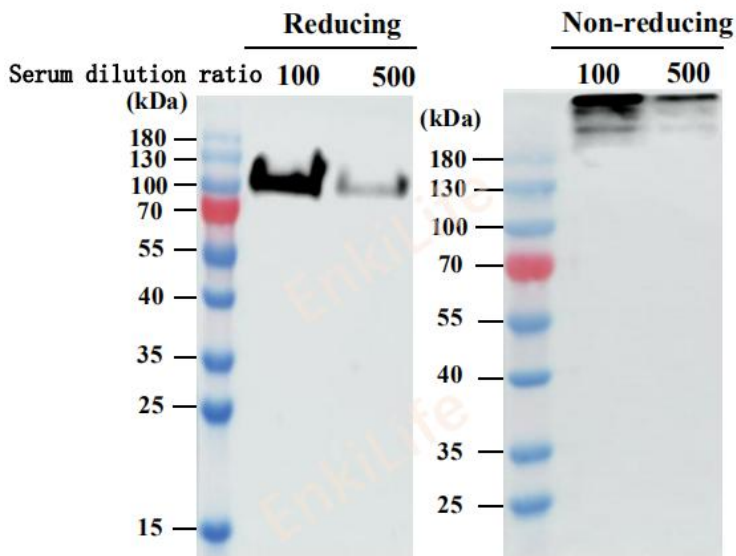
Application

Recommended concentration	ELISA/WB:1:1000 ;FC:1:500
----------------------------------	---------------------------

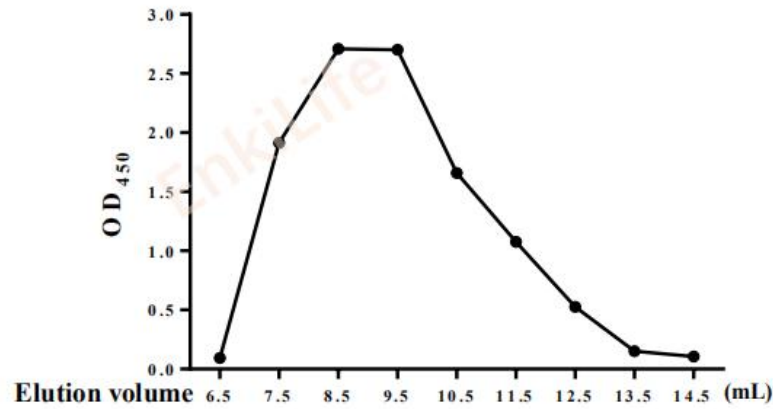
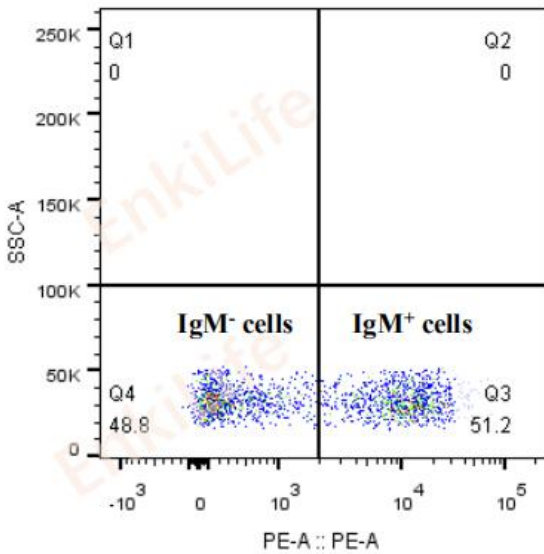
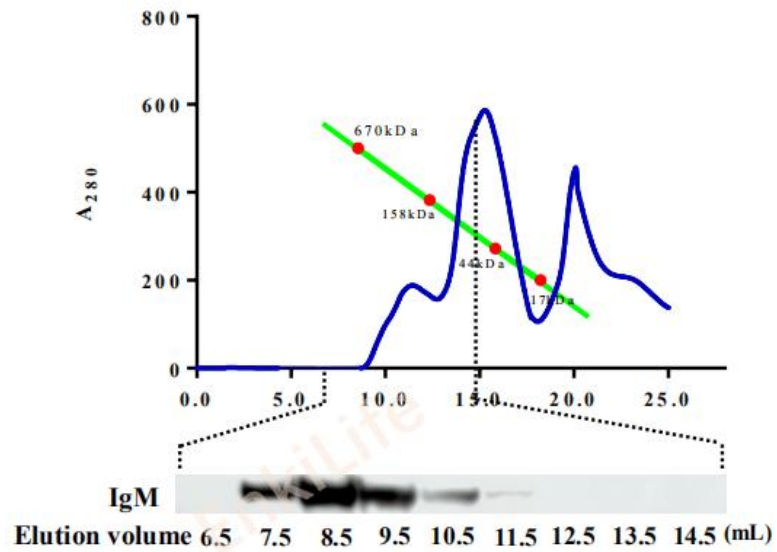
**Product Name: Mouse anti-Goldfish IgM Heavy chain
Monoclonal Antibody
Catalog #: AMM40009**

Selected Validation Data

WB



ELISA



Note

For research use only.