

**Product Name: Mouse anti-Tilapia IgM Heavy chain
Monoclonal Antibody
Catalog #: AMM40003**

Summary

Production Name	Mouse anti-Tilapia IgM heavy chain Monoclonal Antibody
Host	Mouse
Application	ELISA, WB, FC
Reactivity	Tilapia

Performance

Conjugation	Unconjugation
Modification	Unmodification
Isotype	IgG1
Clonality	Monoclonal
Form	Liquid
Storage	Store at -20°C. Stable for one year after shipment.
Buffer	1×PBS, 50% glycerin, 3 mg/mL BSA, pH 7.4.

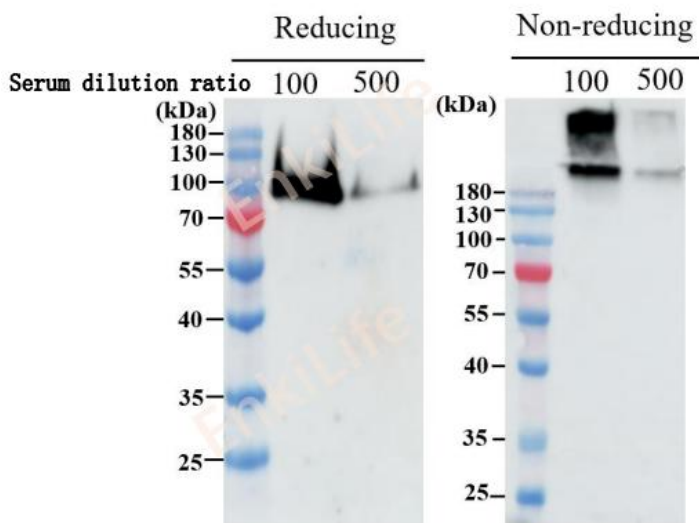
Application

Recommended concentration	ELISA/WB:1:1000 ;FC:1:500
----------------------------------	---------------------------

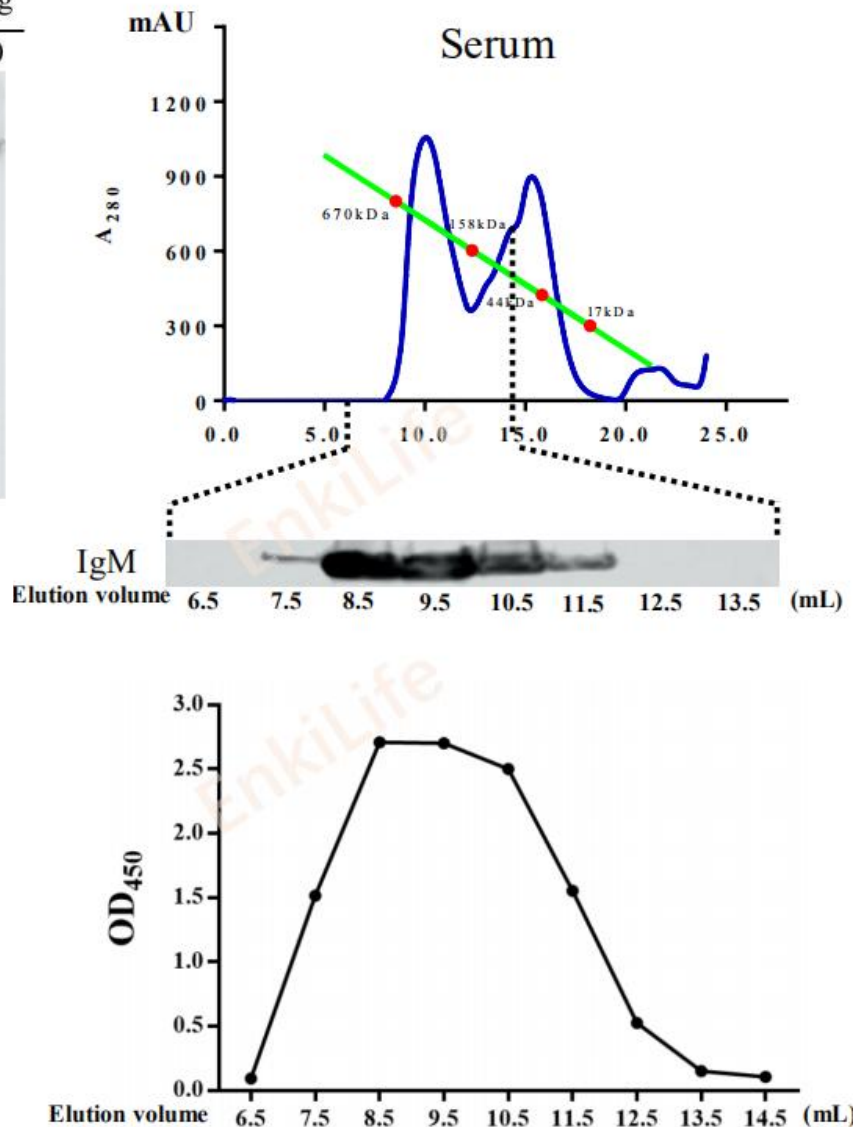
**Product Name: Mouse anti-Tilapia IgM Heavy chain
Monoclonal Antibody
Catalog #: AMM40003**

Selected Validation Data

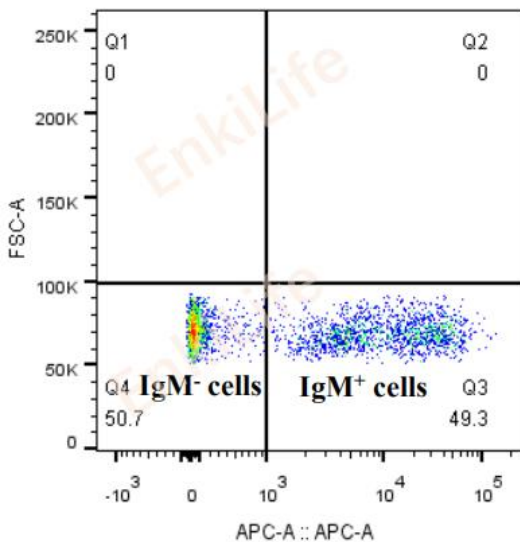
WB



ELISA



FC



Note

For research use only.