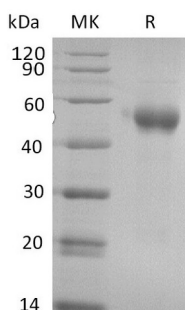


Summary

Name	PVRIG
Purity	Greater than 95% as determined by reducing SDS-PAGE
Endotoxin level	<1 EU/μg as determined by LAL test.
Construction	Recombinant Cynomolgus Transmembrane Protein PVRIG is produced by our Mammalian expression system and the target gene encoding Thr41-Asp171 is expressed with a human IgG1 Fc tag at the C-terminus.
Accession #	A0A2K5WVV8
Host	Human Cells
Species	Cynomolgus
Predicted Molecular Mass	40.6 KDa
Formulation	Lyophilized from a 0.2 μm filtered solution of PBS, pH 7.4.
Shipping	The product is shipped at ambient temperature. Upon receipt, store it immediately at the temperature listed below.
Stability&Storage	Store at ≤-70°C, stable for 6 months after receipt. Store at ≤-70°C, stable for 3 months under sterile conditions after opening. Please minimize freeze-thaw cycles.
Reconstitution	Always centrifuge tubes before opening. Do not mix by vortex or pipetting. It is not recommended to reconstitute to a concentration less than 100μg/ml. Dissolve the lyophilized protein in distilled water. Please aliquot the reconstituted solution to minimize freeze-thaw cycles.

SDS-PAGE image



Background

Product Name: Recombinant Cynomolgus PVRIG (C-Fc)
Catalog #: PHV2375



Alternative Names

C7orf15; CD112R; PVRIG; transmembrane protein PVRIG; C7orf15MGC138295; MGC104322; MGC138297; MGC2463

Background

PVRIG (poliovirus receptor related immunoglobulin domain-containing protein), also known as CD112 receptor (CD112R), is an approximately 34 kDa single transmembrane protein in the poliovirus receptor-like protein (PVR) family. The extracellular domain sequence of human and mouse PVRIG have approximately 65% similarity. PVRIG functions as a cell surface receptor for Nectin-2/CD112, a cell surface protein that is widely expressed on antigen-presenting cells and tumor cells. Disrupting the PVRIG/Nectin-2 interaction enhances human T cell response, suggesting PVRIG is a novel checkpoint for human T cells. PVRIG may act as a coinhibitory receptor that suppresses T-cell receptor-mediated signals.

Note

For Research Use Only , Not for Diagnostic Use.