

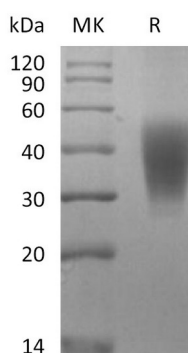
Product Name: Recombinant Rhesus Macaque SLAMF7 (C-6His)
Catalog #: PHV2171



Summary

Name	SLAMF7/CD319/CS1/CRACC/SLAM Family Member 7
Purity	Greater than 95% as determined by reducing SDS-PAGE
Endotoxin level	<1 EU/μg as determined by LAL test.
Construction	Recombinant Rhesus Macaque SLAM Family Member 7 is produced by our Mammalian expression system and the target gene encoding Ser23-Met226 is expressed with a 6His tag at the C-terminus.
Accession #	F7HQ72
Host	Human Cells
Species	Rhesus Macaque
Predicted Molecular Mass	23.3 KDa
Formulation	Lyophilized from a 0.2 μm filtered solution of PBS, pH 7.4.
Shipping	The product is shipped at ambient temperature. Upon receipt, store it immediately at the temperature listed below.
Stability&Storage	Store at ≤-70°C, stable for 6 months after receipt. Store at ≤-70°C, stable for 3 months under sterile conditions after opening. Please minimize freeze-thaw cycles.
Reconstitution	Always centrifuge tubes before opening. Do not mix by vortex or pipetting. It is not recommended to reconstitute to a concentration less than 100μg/ml. Dissolve the lyophilized protein in distilled water. Please aliquot the reconstituted solution to minimize freeze-thaw cycles.

SDS-PAGE image



Background

Product Name: Recombinant Rhesus Macaque SLAMF7 (C-6His)
Catalog #: PHV2171

Alternative Names

SLAM Family Member 7; CD2 Subset 1; CD2-Like Receptor-Activating Cytotoxic Cells; CRACC; Membrane Protein FOAP-12; Novel Ly9; Protein 19A; CD319; SLAMF7; CS1

Background

SLAMF7 is a single-pass type I membrane protein and contains 1 Ig-like C2-type (immunoglobulin-like) domain. SLAMF7 is expressed in NK cells, activated B-cells, NK-cell line but not in promyelocytic, B-cell lines, or T-cell lines. Although the cytoplasmic domain of CS1 contains immunoreceptor tyrosine-based switch motifs (ITSM), which enables to recruit signaling lymphocyte activation molecule (SLAM)-associated protein (SAP/SH2D1A), it activates NK cells in the absence of a functional SAP. SLAMF7 positively regulated natural killer cell functions by a mechanism dependent on the adaptor EAT-2 but not the related adaptor SAP. However, in the absence of EAT-2, CRACC potently inhibited natural killer cell function. It was also inhibitory in T cells, which are typically devoid of EAT-2. Thus, SLAMF7 can exert activating or inhibitory influences on cells of the immune system depending on cellular context and the availability of effector proteins.

Note

For Research Use Only , Not for Diagnostic Use.