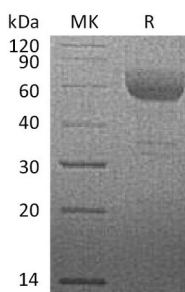


Summary

Name	HVEM/TNFRSF14/CD270
Purity	Greater than 95% as determined by reducing SDS-PAGE
Endotoxin level	<1 EU/μg as determined by LAL test.
Construction	Recombinant Rhesus Macaque Herpesvirus Entry Mediator is produced by our Mammalian expression system and the target gene encoding Pro37-Val203 is expressed with a human IgG1 Fc tag at the C-terminus.
Accession #	XP_005545061.1
Host	Human Cells
Species	Rhesus macaque
Predicted Molecular Mass	44.7 KDa
Formulation	Lyophilized from a 0.2 μm filtered solution of PBS, pH 7.4.
Shipping	The product is shipped at ambient temperature. Upon receipt, store it immediately at the temperature listed below.
Stability&Storage	Store at ≤-70°C, stable for 6 months after receipt. Store at ≤-70°C, stable for 3 months under sterile conditions after opening. Please minimize freeze-thaw cycles.
Reconstitution	Always centrifuge tubes before opening. Do not mix by vortex or pipetting. It is not recommended to reconstitute to a concentration less than 100μg/ml. Dissolve the lyophilized protein in distilled water. Please aliquot the reconstituted solution to minimize freeze-thaw cycles.

SDS-PAGE image



Background

Product Name: Recombinant Rhesus Macaque HVEM (C-Fc)
Catalog #: PHV1964



Alternative Names

Tumor Necrosis Factor Receptor Superfamily Member 14; Herpes Virus Entry Mediator A; Herpesvirus Entry Mediator A; HveA; Tumor Necrosis Factor Receptor-Like 2; TR2; CD270; TNFRSF14; HVEA; HVEM

Background

Herpesvirus entry mediator (HVEM) is a type I membrane protein in the TNF receptor superfamily, and it can both promote and inhibit T cell activity. HVEM is highly expressed on naïve CD4+ T cells, CD8+ T memory cells, regulatory T cells, dendritic cells, monocytes, and neutrophils. It functions as a receptor for BTLA, CD160, LIGHT/TNFSF14, and Lymphotoxin-alpha. Ligand binding by LIGHT triggers T cell, monocyte, and neutrophil activation and contributes to Th1 inflammation and cardiac allograft rejection. In contrast, HVEM binding to CD160 or BTLA suppresses T cell and dendritic cell activation and dampens intestinal inflammation. HVEM enhances the development of CD8+ T cell memory and Treg function. It is additionally expressed on intestinal epithelial cells, where its binding by intraepithelial lymphocyte (IEL) expressed CD160 promotes epithelial integrity and host defense. The herpesvirus envelope glycoprotein gD, which binds HVEM to initiate membrane fusion, can antagonize both BTLA and LIGHT binding.

Note

For Research Use Only , Not for Diagnostic Use.