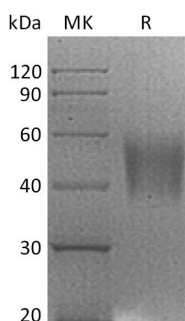


## Summary

<b>Name</b>	B7-H4/VTCN1/B7 Homolog 4/B7S1/B7x
<b>Purity</b>	Greater than 95% as determined by reducing SDS-PAGE
<b>Endotoxin level</b>	<1 EU/μg as determined by LAL test.
<b>Construction</b>	Recombinant Rhesus Macaque B7-H4 is produced by our Mammalian expression system and the target gene encoding Phe29-Ala258 is expressed with a 6His tag at the C-terminus.
<b>Accession #</b>	F7B770
<b>Host</b>	Human Cells
<b>Species</b>	Rhesus macaque
<b>Predicted Molecular Mass</b>	26.4 KDa
<b>Formulation</b>	Lyophilized from a 0.2 μm filtered solution of PBS, pH 7.4.
<b>Shipping</b>	The product is shipped at ambient temperature. Upon receipt, store it immediately at the temperature listed below.
<b>Stability&amp;Storage</b>	Store at ≤-70°C, stable for 6 months after receipt. Store at ≤-70°C, stable for 3 months under sterile conditions after opening. Please minimize freeze-thaw cycles.
<b>Reconstitution</b>	Always centrifuge tubes before opening. Do not mix by vortex or pipetting. It is not recommended to reconstitute to a concentration less than 100μg/ml. Dissolve the lyophilized protein in distilled water. Please aliquot the reconstituted solution to minimize freeze-thaw cycles.

## SDS-PAGE image



## Background

**Product Name: Recombinant Rhesus Macaque B7-H4 (C-6His)**  
**Catalog #: PHV1909**

---

**Alternative Names**

B7S1; B7x; Vtcn1; B7h.5; B7-H4; B7H4T-cell costimulatory molecule B7x; B7S1VCTN1; B7XPRO1291; FLJ22418; Immune costimulatory protein B7-H4; Protein B7S1; T cell costimulatory molecule B7x; V-set domain containing T cell activation inhibitor 1; V-set domain-containing T-cell activation inhibitor 1

**Background**

B7 Homolog 4 (B7-H4) is glycosylated member of the B7 family of immune costimulatory proteins. It is widely expressed, including in kidney, liver, lung, pancreas, placenta, prostate, spleen, testis and thymus. B7-H4 negatively regulates T-cell-mediated immune response by inhibiting T-cell activation, proliferation, cytokine production and development of cytotoxicity. When expressed on the cell surface of tumor macrophages, plays an important role, together with regulatory T-cells (Treg), in the suppression of tumor-associated antigen-specific T-cell immunity. It also involved in promoting epithelial cell transformation.

**Note**

For Research Use Only , Not for Diagnostic Use.