

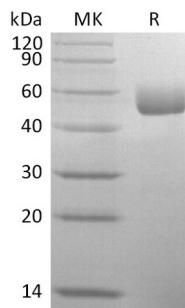
**Product Name: Recombinant Mouse Serpin A1a (C-6His, AAH11040.1)**  
**Catalog #: PHM2326**

---

## Summary

<b>Name</b>	Serpin A1a/Alpha-1-antitrypsin 1-1
<b>Purity</b>	Greater than 95% as determined by reducing SDS-PAGE
<b>Endotoxin level</b>	<1 EU/μg as determined by LAL test.
<b>Construction</b>	Recombinant Mouse Serine protease inhibitor A1a is produced by our Mammalian expression system and the target gene encoding Glu25-Lys413 is expressed with a 6His tag at the C-terminus.
<b>Accession #</b>	AAH11040.1
<b>Host</b>	Human Cells
<b>Species</b>	Mouse
<b>Predicted Molecular Mass</b>	44.3 KDa
<b>Formulation</b>	Supplied as a 0.2 μm filtered solution of 20mM Tris-HCl, 150mM NaCl, pH 8.0.
<b>Shipping</b>	The product is shipped on dry ice/polar packs. Upon receipt, store it immediately at the temperature listed below.
<b>Stability&amp;Storage</b>	Store at ≤-70°C, stable for 6 months after receipt. Store at ≤-70°C, stable for 3 months under sterile conditions after opening. Please minimize freeze-thaw cycles.
<b>Reconstitution</b>	

## SDS-PAGE image



## Background

<b>Alternative Names</b>	Alpha-1-antitrypsin 1-1, Alpha-1 protease inhibitor 1, Alpha-1-antiproteinase, Serine protease inhibitor 1-1, Serine protease inhibitor A1a, Serpin A1a, AAT.
<b>Background</b>	Serpin A1a is also known as alpha-1-antitrypsin, is a member of the serpin superfamily of serine proteinase inhibitors that are involved in the regulation of a

**Product Name: Recombinant Mouse Serpin A1a (C-6His, AAH110401)**  
**Catalog #: PHM2326**



---

number of proteolytic processes. Its primary target is elastase, but it also has a moderate affinity for plasmin and thrombin.

**Note**

For Research Use Only , Not for Diagnostic Use.