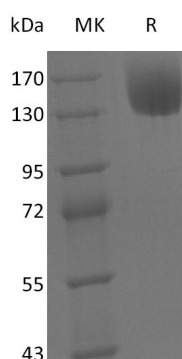


## Summary

|                                 |  |
|---------------------------------|--|
| <b>Name</b>                     | LEPR/Leptin Receptor/CD295   |
| <b>Purity</b>                   | Greater than 95% as determined by reducing SDS-PAGE  |
| <b>Endotoxin level</b>          | <1 EU/μg as determined by LAL test.  |
| <b>Construction</b>             | Recombinant Mouse Leptin Receptor is produced by our Mammalian expression system and the target gene encoding Leu22-Gly839 is expressed with a human IgG1 Fc tag at the C-terminus.  |
| <b>Accession #</b>              | P48356   |
| <b>Host</b>                     | Human Cells  |
| <b>Species</b>                  | Mouse  |
| <b>Predicted Molecular Mass</b> | 119.1 KDa  |
| <b>Formulation</b>              | Lyophilized from a 0.2 μm filtered solution of PBS, pH 7.4.  |
| <b>Shipping</b>                 | The product is shipped at ambient temperature. Upon receipt, store it immediately at the temperature listed below.   |
| <b>Stability&amp;Storage</b>    | Store at ≤-70°C, stable for 6 months after receipt. Store at ≤-70°C, stable for 3 months under sterile conditions after opening. Please minimize freeze-thaw cycles.   |
| <b>Reconstitution</b>           | Always centrifuge tubes before opening. Do not mix by vortex or pipetting. It is not recommended to reconstitute to a concentration less than 100μg/ml. Dissolve the lyophilized protein in distilled water. Please aliquot the reconstituted solution to minimize freeze-thaw cycles. |

## SDS-PAGE image



**Product Name: Recombinant Mouse LEPR (C-Fc)**  
**Catalog #: PHM2288**



---

## Background

**Alternative Names** Leptin receptor; LEP-R; HuB219; OB receptor; OB-R; CD295; LEPR; DB; OBR

**Background** The Leptin receptor is a member of the Class I cytokine receptor family. It mediates the activities of Leptin, a multi-functional hormone produced primarily by adipose tissues that plays roles in food intake, energy metabolism, angiogenesis, reproduction, hematopoiesis, bone metabolism, and immune function. The human Leptin R gene encodes 1165 amino acids (aa) including a signal peptide, an extracellular region with cytokine receptor homology (CRH), multiple fibronectin type III domains and a WSXWS motif, a transmembrane domain, and a cytoplasmic domain that supports JAK/STAT signaling. Soluble Leptin R is the primary Leptin-binding protein in blood, where it maintains a pool of available bioactive Leptin, delays Leptin clearance from circulation, and down-regulates blood-brain transmission of Leptin. In humans, soluble Leptin R levels are inversely proportional to adiposity and are elevated in females versus males. Soluble Leptin R is also found up-regulated in patients with chronic heart failure, end-stage renal disease, and anorexia. It is expressed by tumor-initiating stem cells, and is proposed as a link between cancer and obesity.

## Note

For Research Use Only , Not for Diagnostic Use.