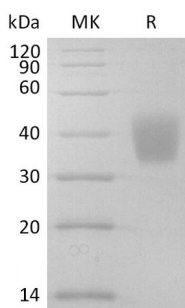


## Summary

<b>Name</b>	IL-4 R alpha/CD124/IL-4RA/Interleukin-4 Receptor Subunit Alpha/prot
<b>Purity</b>	Greater than 95% as determined by reducing SDS-PAGE
<b>Endotoxin level</b>	<1 EU/μg as determined by LAL test.
<b>Construction</b>	Recombinant Mouse Interleukin-4 receptor subunit alpha is produced by our Mammalian expression system and the target gene encoding Ile26-Arg233 is expressed with a 6His tag at the C-terminus.
<b>Accession #</b>	P16382
<b>Host</b>	Human Cells
<b>Species</b>	Mouse
<b>Predicted Molecular Mass</b>	25.2 KDa
<b>Formulation</b>	Lyophilized from a 0.2 μm filtered solution of PBS, pH 7.4.
<b>Shipping</b>	The product is shipped at ambient temperature. Upon receipt, store it immediately at the temperature listed below.
<b>Stability&amp;Storage</b>	Store at ≤-70°C, stable for 6 months after receipt. Store at ≤-70°C, stable for 3 months under sterile conditions after opening. Please minimize freeze-thaw cycles.
<b>Reconstitution</b>	Always centrifuge tubes before opening. Do not mix by vortex or pipetting. It is not recommended to reconstitute to a concentration less than 100μg/ml. Dissolve the lyophilized protein in distilled water. Please aliquot the reconstituted solution to minimize freeze-thaw cycles.

## SDS-PAGE image



## Background

**Product Name: Recombinant Mouse IL-4RA (C-6His)**  
**Catalog #: PHM2286**



---

**Alternative Names**

Interleukin-4 receptor subunit alpha; IL-4R-alpha; CD124; IL4-BP; Soluble IL-4R-alpha

**Background**

Interleukin-4 receptor subunit alpha(IL-4RA), also known as Soluble IL-4 receptor subunit alpha, belongs to the type I cytokine receptor family and type 4 subfamily. It is expressed in both Th1 and Th2 cells. It functions as a receptor for both interleukin 4 and interleukin 13 and couples to the JAK1/2/3-STAT6 pathway. The IL4 response is involved in promoting Th2 differentiation. The IL4/IL13 responses are involved in regulating IgE production and chemokine and mucus production at sites of allergic inflammation. In certain cell types, IL-4RA can signal through activation of insulin receptor substrates, IRS1/IRS2. The functional IL4 receptor is formed by the initial binding of IL4 to IL4R. Subsequently, it recruits to the complex of the common gamma chain. In immune cells, IL-4RA creates a type I receptor. In non-immune cells, it forms a type II receptor with IL13RA1. IL4R can also interact with the IL13/IL13RA1 complex to form a similar type II receptor and interacts with the SH2-containing phosphatases, PTPN6/SHP1, PTPN11/SHP2 and INPP5D/SHP.

**Note**

For Research Use Only , Not for Diagnostic Use.