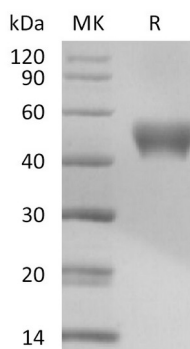


Summary

Name	CD24/Signal Transducer CD24
Purity	Greater than 95% as determined by reducing SDS-PAGE
Endotoxin level	<1 EU/μg as determined by LAL test.
Construction	Recombinant Mouse Signal Transducer CD24 is produced by our Mammalian expression system and the target gene encoding Asn27-Gly53 is expressed with a human IgG1 Fc tag at the C-terminus.
Accession #	P24807
Host	Human Cells
Species	Mouse
Predicted Molecular Mass	29.6 KDa
Formulation	Lyophilized from a 0.2 μm filtered solution of PBS, pH 7.4.
Shipping	The product is shipped at ambient temperature. Upon receipt, store it immediately at the temperature listed below.
Stability&Storage	Store at ≤-70°C, stable for 6 months after receipt. Store at ≤-70°C, stable for 3 months under sterile conditions after opening. Please minimize freeze-thaw cycles.
Reconstitution	Always centrifuge tubes before opening. Do not mix by vortex or pipetting. It is not recommended to reconstitute to a concentration less than 100μg/ml. Dissolve the lyophilized protein in distilled water. Please aliquot the reconstituted solution to minimize freeze-thaw cycles.

SDS-PAGE image



Background

Product Name: Recombinant Mouse CD24 (C-Fc)
Catalog #: PHM2248



Alternative Names

Signal transducer CD24; Small cell lung carcinoma cluster 4 antigen; CD24; CD24A

Background

Signal Transducer CD24 is a heavily and variably glycosylated GPI-linked sialoprotein. Human CD24 is expressed on B lineage cells and granulocytes, on epithelial, neuronal, and muscle cells, and on a range of tumor cells. CD24 expression is regulated during lineage development and with the activation of various cell types. Antibody crosslinking of CD24 enhances the induction of apoptosis in B and T lymphocytes which contributes to negative selection and the induction of immune tolerance. CD24 on antigen presenting cells cooperates with B7 molecules in the costimulation of T cells. CD24 associates in cis with Siglec10 and with the danger-associated molecules HMGB1, HSP70, or HSP90 which are released from necrotic or damaged cells. Formation of these ternary complexes fills a protective role: the resulting Siglec10 signaling inhibits inflammatory responses that are otherwise induced by extracellular DAMPs.

Note

For Research Use Only , Not for Diagnostic Use.