

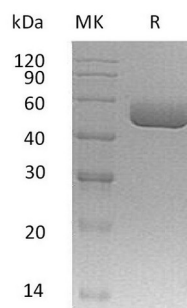
**Product Name: Recombinant Mouse Serpin A1a (C-6His, AAC28869.1)**  
**Catalog #: PHM1498**

---

## Summary

<b>Name</b>	Serpin A1b
<b>Purity</b>	Greater than 95% as determined by reducing SDS-PAGE
<b>Endotoxin level</b>	<1 EU/ $\mu$ g as determined by LAL test.
<b>Construction</b>	Recombinant Mouse Serine Protease Alpha-1 protease inhibitor 1 is produced by our Mammalian expression system and the target gene encoding Glu25-Lys413 is expressed with a 6His tag at the C-terminus
<b>Accession #</b>	AAC28869.1
<b>Host</b>	Human Cells
<b>Species</b>	Mouse
<b>Predicted Molecular Mass</b>	44.5 KDa
<b>Formulation</b>	Lyophilized from a 0.2 $\mu$ m filtered solution of PBS, pH 7.4.
<b>Shipping</b>	The product is shipped at ambient temperature. Upon receipt, store it immediately at the temperature listed below.
<b>Stability&amp;Storage</b>	Store at $\leq$ -70°C, stable for 6 months after receipt. Store at $\leq$ -70°C, stable for 3 months under sterile conditions after opening. Please minimize freeze-thaw cycles.
<b>Reconstitution</b>	Always centrifuge tubes before opening. Do not mix by vortex or pipetting. It is not recommended to reconstitute to a concentration less than 100 $\mu$ g/ml. Dissolve the lyophilized protein in distilled water. Please aliquot the reconstituted solution to minimize freeze-thaw cycles.

## SDS-PAGE image



## Background

---

**Product Name: Recombinant Mouse Serpin A1a (C-6His, AAC288691)**  
**Catalog #: PHM1498**

---

**Alternative Names**

Alpha-1-antitrypsin 1-1, Alpha-1 protease inhibitor 1, Alpha-1-antiproteinase, Serine protease inhibitor 1-1, Serine protease inhibitor A1a, Serpin A1a, AAT.

**Background**

Serpin A1a is also known as alpha-1-antitrypsin, is a member of the serpin superfamily of serine proteinase inhibitors that are involved in the regulation of a number of proteolytic processes. Its primary target is elastase, but it also has a moderate affinity for plasmin and thrombin.

**Note**

For Research Use Only , Not for Diagnostic Use.