

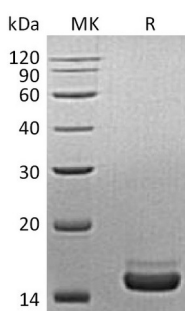
Product Name: Recombinant Mouse PLA2G1B (C-6His)
Catalog #: PHM1325



Summary

Name	Phospholipase A2/PLA2-1b/Group IB phospholipase A2/Phosphatidylcholine 2-acylhydrolase 1B/Pla2g1b/Pla2
Purity	Greater than 95% as determined by reducing SDS-PAGE
Endotoxin level	<1 EU/μg as determined by LAL test.
Construction	Recombinant Mouse Phospholipase A2 is produced by our Mammalian expression system and the target gene encoding Ala16-Cys146 is expressed with a 6His tag at the C-terminus.
Accession #	Q9Z0Y2
Host	Human Cells
Species	Mouse
Predicted Molecular Mass	15.6 KDa
Formulation	Supplied as a 0.2 μm filtered solution of 20mM HEPES, 150mM NaCl, pH 7.0.
Shipping	The product is shipped on dry ice/polar packs. Upon receipt, store it immediately at the temperature listed below.
Stability&Storage	Store at ≤-70°C, stable for 6 months after receipt. Store at ≤-70°C, stable for 3 months under sterile conditions after opening. Please minimize freeze-thaw cycles.
Reconstitution	

SDS-PAGE image



Background

Alternative Names	Phospholipase A2; Group IB phospholipase A2; PLA2-1b; Phosphatidylcholine 2-acylhydrolase 1B; Pla2g1b; Pla2
Background	Mouse phospholipase A2 is a secreted protein which belongs to the phospholipase A2 family. Phospholipase A2/PLA2G1B catalyzes the release of fatty acids from

Product Name: Recombinant Mouse PLA2G1B (C-6His)
Catalog #: PHM1325



glycero-3-phosphocholines. The best known varieties are the digestive enzymes secreted as zymogens by the pancreas of mammals. PLA2G1B has been thought to play major role in digestion of glycerophospholipids in nutrients, given its abundance in digestive organs. Since its expression has been observed in non-digestive organs including the lung, spleen, kidney, ovary, retina, brain, and neurons, its function may not limited to digestive role. PLA2G1B are resistant to obesity and diabetes induced by feeding a diabetogenic high-fat/high-carbohydrate diet. PLA2G1B inhibition may be a potentially effective oral therapeutic option for treatment of obesity and diabetes.

Note

For Research Use Only , Not for Diagnostic Use.