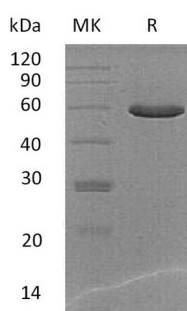


Summary

Name	PGCP/Carboxypeptidase Q/Hematopoietic lineage switch 2
Purity	Greater than 95% as determined by reducing SDS-PAGE
Endotoxin level	<1 EU/μg as determined by LAL test.
Construction	Recombinant Mouse Plasma Glutamate Carboxypeptidase is produced by our Mammalian expression system and the target gene encoding Lys19-Ser470 is expressed with a 6His tag at the C-terminus.
Accession #	Q9WVJ3
Host	Human Cells
Species	Mouse
Predicted Molecular Mass	50.8 KDa
Formulation	Supplied as a 0.2 μm filtered solution of 20mM PB, 150mM NaCl, pH 7.4.
Shipping	The product is shipped on dry ice/polar packs. Upon receipt, store it immediately at the temperature listed below.
Stability&Storage	Store at ≤-70°C, stable for 6 months after receipt. Store at ≤-70°C, stable for 3 months under sterile conditions after opening. Please minimize freeze-thaw cycles.
Reconstitution	

SDS-PAGE image



Background

Alternative Names	PGCP;Carboxypeptidase Q;Hematopoietic lineage switch 2;Plasma glutamate carboxypeptidase;Cpq;Hls2
Background	Carboxypeptidase Q (Cpq) is a member of the peptidase M28 family. PGCP is involved in a number of fundamental biological processes such as the hydrolysis of

Product Name: Recombinant Mouse PGCP (C-6His)
Catalog #: PHM1316



circulating peptides, catalyzing the hydrolysis of dipeptides with unsubstituted terminals into amino acids. Carboxypeptidase may play an important role in the liberation of thyroxine hormone from its thyroglobulin (Tg) precursor. The monomeric form is inactive while the homodimer is active.

Note

For Research Use Only , Not for Diagnostic Use.