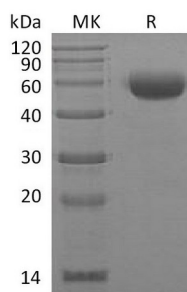


Summary

Name	IL-22/Interleukin-22
Purity	Greater than 95% as determined by reducing SDS-PAGE
Endotoxin level	<1 EU/μg as determined by LAL test.
Construction	Recombinant Mouse Interleukin-22 is produced by our Mammalian expression system and the target gene encoding Leu34-Val179 is expressed with a mouse IgG1 Fc tag at the C-terminus.
Accession #	Q9JJY9
Host	Human Cells
Species	Mouse
Predicted Molecular Mass	43.8 KDa
Formulation	Lyophilized from a 0.2 μm filtered solution of 20mM PB, 150mM NaCl, pH 7.4.
Shipping	The product is shipped at ambient temperature. Upon receipt, store it immediately at the temperature listed below.
Stability&Storage	Store at ≤-70°C, stable for 6 months after receipt. Store at ≤-70°C, stable for 3 months under sterile conditions after opening. Please minimize freeze-thaw cycles.
Reconstitution	Always centrifuge tubes before opening. Do not mix by vortex or pipetting. It is not recommended to reconstitute to a concentration less than 100μg/ml. Dissolve the lyophilized protein in distilled water. Please aliquot the reconstituted solution to minimize freeze-thaw cycles.

SDS-PAGE image



Background

Product Name: Recombinant Mouse IL-22 (C-mFc)
Catalog #: PHM0999



Alternative Names

Interleukin-22; IL-22; IL-TIF alpha; IL-10-related T-cell-derived-inducible factor; IL-TIF; IL22; Interleukin-22a; IL-22a

Background

Interleukin-22 (IL-22) was initially identified as a gene induced by IL-9 in mouse T cells and mast cells. Mouse IL-22 cDNA encodes a 179 amino acid residue protein with a putative 33 amino acid signal peptide that is cleaved to generate a 147 amino acid mature protein that shares approximately 79% and 22% sequence identity with human IL22 and IL10, respectively. IL22 has been shown to activate STAT-1 and STAT-3 in several hepatoma cell lines and up-regulate the production of acute phase proteins. IL-22 is produced by normal mouse T cells upon Con A activation. Mouse IL-22 expression is also induced in various organs upon lipopolysaccharide injection, suggesting that IL-22 may be involved in inflammatory responses. The functional IL-22 receptor complex consists of two receptor subunits, IL-22R (previously an orphan receptor named CRF2-9) and IL-10R β (previously known as CRF2-4), belonging to the class II cytokine receptor family.

Note

For Research Use Only , Not for Diagnostic Use.