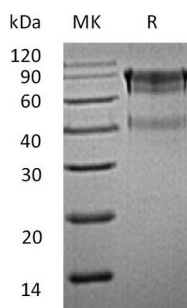


Summary

Name	IL-15 R alpha/IL-15R α /IL-15RA/Interleukin-15 receptor subunit alpha
Purity	Greater than 95% as determined by reducing SDS-PAGE
Endotoxin level	<1 EU/ μ g as determined by LAL test.
Construction	Recombinant Mouse Interleukin-15 Receptor Subunit Alpha is produced by our Mammalian expression system and the target gene encoding Gly33-Lys205 is expressed with a human IgG1 Fc tag at the C-terminus.
Accession #	Q60819
Host	Human Cells
Species	Mouse
Predicted Molecular Mass	45.5 KDa
Formulation	Lyophilized from a 0.2 μ m filtered solution of 20mM PB, 150mM NaCl, pH 7.4.
Shipping	The product is shipped at ambient temperature. Upon receipt, store it immediately at the temperature listed below.
Stability&Storage	Lyophilized protein should be stored at $\leq -20^{\circ}\text{C}$, stable for one year after receipt. Reconstituted protein solution can be stored at 2-8 $^{\circ}\text{C}$ for 2-7 days. Aliquots of reconstituted samples are stable at $\leq -20^{\circ}\text{C}$ for 3 months.
Reconstitution	Always centrifuge tubes before opening. Do not mix by vortex or pipetting. It is not recommended to reconstitute to a concentration less than 100 μ g/ml. Dissolve the lyophilized protein in distilled water. Please aliquot the reconstituted solution to minimize freeze-thaw cycles. Always centrifuge tubes before opening. Do not mix by vortex or pipetting. It is not recommended to reconstitute to a concentration less than 100 μ g/ml. Dissolve the lyophilized protein in distilled water. Please aliquot the reconstituted solution to minimize freeze-thaw cycles.

SDS-PAGE image



Background

Product Name: Recombinant Mouse IL-15RA (C-Fc)
Catalog #: PHM0873



Alternative Names

Interleukin-15 receptor subunit alpha; Il15ra; sIL-15 receptor subunit alpha

Background

Mouse interleukin-15 receptor subunit alpha, also known as Il15ra, is a high-affinity receptor for interleukin-15. Il15ra associates as a heterotrimer with the IL-2 receptor beta and gamma subunits (Common gamma chain, or gamma c) to initiate signal transduction. It can signal both in cis and trans where IL15R from one subset of cells presents IL15 to neighboring IL2RG-expressing cells. Il15ra is expressed in special cells including a wide variety of Tand B cells and non-lymphoid cells. Human Il15ra shares 45% amino acid sequence homology with the mouse form of the receptor. Eight isoforms of IL-15 R alpha mRNA have been identified, resulting from alternative splicing events involving different exons.

Note

For Research Use Only , Not for Diagnostic Use.