

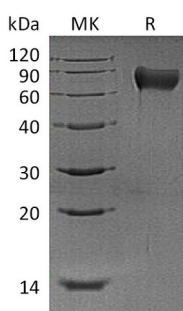
**Product Name: Recombinant Mouse Hemopexin (C-6His)**  
**Catalog #: PHM0785**



## Summary

<b>Name</b>	Hemopexin
<b>Purity</b>	Greater than 95% as determined by reducing SDS-PAGE
<b>Endotoxin level</b>	<1 EU/μg as determined by LAL test.
<b>Construction</b>	Recombinant Mouse Hemopexin is produced by our Mammalian expression system and the target gene encoding Ser24-Gln460 is expressed with a 6His tag at the C-terminus.
<b>Accession #</b>	Q91X72
<b>Host</b>	Human Cells
<b>Species</b>	Mouse
<b>Predicted Molecular Mass</b>	49.8 KDa
<b>Formulation</b>	Supplied as a 0.2 μm filtered solution of 20mM MES, 150mM NaCl, pH 5.5.
<b>Shipping</b>	The product is shipped on dry ice/polar packs. Upon receipt, store it immediately at the temperature listed below.
<b>Stability&amp;Storage</b>	Store at ≤-70°C, stable for 6 months after receipt. Store at ≤-70°C, stable for 3 months under sterile conditions after opening. Please minimize freeze-thaw cycles.
<b>Reconstitution</b>	

## SDS-PAGE image



## Background

<b>Alternative Names</b>	Hemopexin;Hpx;Hpxn
<b>Background</b>	Hemopexin (HPX) is plasma glycoprotein belongs to the family of the acute-phase proteins whose synthesis is induced after an inflammatory event. Hemopexin with

**Product Name: Recombinant Mouse Hemopexin (C-6His)**  
**Catalog #: PHM0785**



---

two four-bladed beta -propeller folds has been found in other proteins including collagenases and provides sites for protein-protein interactions. The liver is the major synthesizing organ. Hemopexin participates in maintaining and recycling the iron pool by utilizing its high binding affinity toward heme composed of protoporphyrin IX and iron. It also functions in preventing oxidation caused by heme after hemolysis. Hydrophobic heme molecules can intercalate into lipid membranes and participate in the oxidation of lipid membrane components through the Fenton reaction resulting in lipid peroxidation. Hemopexin undergoes a conformational change upon the binding of heme. The conformational change allows hemopexin to interact with a specific receptor, forming a complex which is then internalized. Heme concentrations in plasma increase after hemolysis, which is associated with several pathological conditions such as reperfusion injury and ischemia.

### **Note**

For Research Use Only , Not for Diagnostic Use.