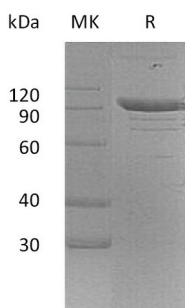


Summary

Name	PSGL-1/CD162/SELPLG/P-selectin glycoprotein ligand 1
Purity	Greater than 95% as determined by reducing SDS-PAGE
Endotoxin level	<1 EU/μg as determined by LAL test.
Construction	Recombinant Mouse P-selectin Glycoprotein Ligand 1 is produced by our Mammalian expression system and the target gene encoding Gln42-Cys307 is expressed with a human IgG1 Fc tag at the C-terminus.
Accession #	CAA62583.1
Host	Human Cells
Species	Mouse
Predicted Molecular Mass	54.7 KDa
Formulation	Lyophilized from a 0.2 μm filtered solution of 20mM PB, 150mM NaCl, pH 7.4.
Shipping	The product is shipped at ambient temperature. Upon receipt, store it immediately at the temperature listed below.
Stability&Storage	Store at ≤-70°C, stable for 6 months after receipt. Store at ≤-70°C, stable for 3 months under sterile conditions after opening. Please minimize freeze-thaw cycles.
Reconstitution	Always centrifuge tubes before opening. Do not mix by vortex or pipetting. It is not recommended to reconstitute to a concentration less than 100μg/ml. Dissolve the lyophilized protein in distilled water. Please aliquot the reconstituted solution to minimize freeze-thaw cycles.

SDS-PAGE image



Background

Product Name: Recombinant Mouse PSGL-1 (C-Fc)
Catalog #: PHM0299



Alternative Names

CLA; CD162; PSGL1; PSGL-1

Background

P-selectin glycoprotein ligand 1 is the high affinity counter-receptor for P-selectin on expressed on activated endothelial cells and platelets. As such, it plays a critical role in the tethering of these cells to activated platelets or endothelia expressing P-selectin. As cell adhesion molecules, multiple studies have shown that PSGL-1/ P-selectin interaction is required for the normal recruitment of leukocytes during inflammatory reactions, and also participates in hemostatic responses. PSGL-1 can also bind to other two members of the selectin family, E-selectin (endothelial) and L-selectin (leukocyte), but binds best to P-selectin.

Note

For Research Use Only , Not for Diagnostic Use.