

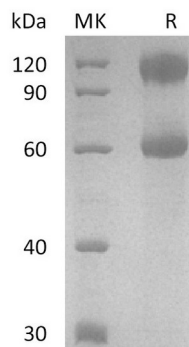
**Product Name: Recombinant Human IL-2 R beta&IL-2 R alpha&IL-2 R gamma Heterotrimer Protein (C-Fc)**  
**Catalog #: PHH2465**

---

## Summary

|                                 |   |
|---------------------------------|---|
| <b>Name</b>                     | IL-2 R beta&IL-2 R alpha&IL-2 R gamma Heterotrimer  |
| <b>Purity</b>                   | Greater than 95% as determined by reducing SDS-PAGE   |
| <b>Endotoxin level</b>          | <1 EU/μg as determined by LAL test.   |
| <b>Construction</b>             | Recombinant HumanIL-2 R beta&IL-2 R alpha&IL-2 R gamma Heterotrimer is produced by our Mammalian expression system and the target gene encoding Met1-Ser212&Leu23-Asn254&Met1-Asp239 is expressed with a human IgG1 Fc tag at the C-terminus. |
| <b>Accession #</b>              | P14784&P01589&P31785  |
| <b>Host</b>                     | Human Cells   |
| <b>Species</b>                  | Human   |
| <b>Predicted Molecular Mass</b> | 51.4&75.7 KDa   |
| <b>Formulation</b>              | Supplied as a 0.2 μm filtered solution of PBS, pH7.4.   |
| <b>Shipping</b>                 | The product is shipped on dry ice/polar packs. Upon receipt, store it immediately at the temperature listed below.  |
| <b>Stability&amp;Storage</b>    | Store at ≤-70°C, stable for 6 months after receipt. Store at ≤-70°C, stable for 3 months under sterile conditions after opening. Please minimize freeze-thaw cycles.  |
| <b>Reconstitution</b>           |   |

## SDS-PAGE image



## Background

**Product Name: Recombinant Human IL-2 R beta & IL-2 R alpha & IL-2 R gamma  
Heterotrimer Protein (C-Fc)  
Catalog #: PHH2465**

---

**Alternative Names**

IL-2 R beta & IL-2 R alpha & IL-2 R gamma

**Background**

Proliferation of T lymphocytes is triggered by the interaction of IL-2 with its specific receptor following T lymphocyte activation. The receptor for IL-2 consists of at least three distinct subunits, the alpha chain (IL-2R $\alpha$ ), the beta chain (IL-2R $\beta$ ), and the gamma chain (IL-2R $\gamma$ ). Interleukin-2 (IL-2), one of the first lymphokines to be identified, plays a central role in the clonal expansion of activated T lymphocytes (T cells) by interacting with its specific cell surface receptor (IL-2 receptor). Antigen-specific, clonal proliferation of T cells is initiated via a process of signal transduction, wherein the specific interaction of the antigen/MHC molecule and T cell antigen receptor complex (TCR) triggers the expression of IL-2 and its homologous receptor (IL-2R).

**Note**

For Research Use Only , Not for Diagnostic Use.