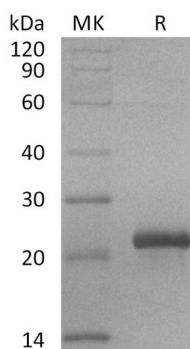


## Summary

<b>Name</b>	RSPO2/R-spondin 2
<b>Purity</b>	Greater than 95% as determined by reducing SDS-PAGE
<b>Endotoxin level</b>	<0.01 EU/μg as determined by LAL test.
<b>Construction</b>	Recombinant Human R-spondin-2 is produced by our Mammalian expression system and the target gene encoding Gln22-Gly205 is expressed with a Flag tag at the C-terminus.
<b>Accession #</b>	Q6UXX9
<b>Host</b>	Human cells
<b>Species</b>	Human
<b>Predicted Molecular Mass</b>	22.3 KDa
<b>Formulation</b>	Lyophilized from a 0.2 μm filtered solution of PBS, pH7.4.
<b>Shipping</b>	The product is shipped at ambient temperature. Upon receipt, store it immediately at the temperature listed below.
<b>Stability&amp;Storage</b>	Lyophilized protein should be stored at ≤ -20°C, stable for one year after receipt. Reconstituted protein solution can be stored at 2-8°C for 2-7 days. Aliquots of reconstituted samples are stable at ≤ -20°C for 3 months.
<b>Reconstitution</b>	Always centrifuge tubes before opening. Do not mix by vortex or pipetting. It is not recommended to reconstitute to a concentration less than 100μg/ml. Dissolve the lyophilized protein in distilled water. Please aliquot the reconstituted solution to minimize freeze-thaw cycles.

## SDS-PAGE image



## Background

**Product Name: Recombinant Human RSPO2 (C-Flag)**  
**Catalog #: PHH2456**



---

**Alternative Names**

R-spondin-2; RSPO2; Roof plate-specific spondin-2; hRspo2; PRO34209

**Background**

R-spondin-2, also known as RSPO2, synergizes with Wnt to activate beta-catenin. R-spondins are a family of four matricellular proteins produced by a variety of cell-types. The four R spondin secreted ligands (RSPO1–RSPO4) act via their cognate LGR4, LGR5 and LGR6 receptors to amplify WNT signalling. Rspo2 in FGF pathway regulation in vivo Overexpressed Rspo2 inhibited elongation of Xenopus ectoderm explants and Erk1 activation in response to FGF. R-spondin2 (RSPO2) plays a crucial role in the activation of the WNT/ $\beta$ -catenin pathway and oncogenesis, RSPO2 in GC specimens and cell lines is closely related to tumor invasion and migration and that RSPO2 promotes EMT in gastric cancer cells by activating WNT/ $\beta$ -catenin signaling.

**Note**

For Research Use Only , Not for Diagnostic Use.