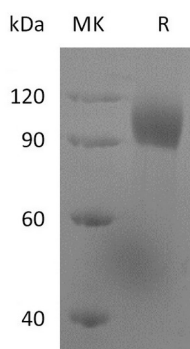


Summary

Name	LILRB1/ILT2/CD85j/Lir-1/LIR1/MIR7/Leukocyte Ig-Like Receptor B1/Leukocyte Immunoglobulin-Like Receptor Subfamily B Member 1
Purity	Greater than 95% as determined by reducing SDS-PAGE
Endotoxin level	<1 EU/ μ g as determined by LAL test.
Construction	Recombinant Leukocyte immunoglobulin-like receptor subfamily B member 1 is produced by our Mammalian expression system and the target gene encoding Gly24-His458 is expressed with a mouse IgG1 Fc tag at the C-terminus.
Accession #	ADJ55949.1
Host	Human Cells
Species	Human
Predicted Molecular Mass	73.6 KDa
Formulation	Lyophilized from a 0.2 μ m filtered solution of PBS, pH 7.4.
Shipping	The product is shipped at ambient temperature. Upon receipt, store it immediately at the temperature listed below.
Stability&Storage	Store at \leq -70°C, stable for 6 months after receipt. Store at \leq -70°C, stable for 3 months under sterile conditions after opening. Please minimize freeze-thaw cycles.
Reconstitution	Always centrifuge tubes before opening. Do not mix by vortex or pipetting. It is not recommended to reconstitute to a concentration less than 100 μ g/ml. Dissolve the lyophilized protein in distilled water. Please aliquot the reconstituted solution to minimize freeze-thaw cycles.

SDS-PAGE image



Product Name: Recombinant Human LILRB1 (C-mFc)
Catalog #: PHH2386



Background

Alternative Names

Leukocyte immunoglobulin-like receptor subfamily B member 1; LIR-1; Leukocyte immunoglobulin-like receptor 1; CD85 antigen-like family member J; Immunoglobulin-like transcript 2; ILT-2; Monocyte/macrophage immunoglobulin-like receptor 7; MIR-7; CD85j; LILRB1; ILT2; LIR1; MIR7

Background

Leukocyte immunoglobulin-like receptor subfamily B member 1 (LILRB1) is known as CD85j. It is a receptor for class I MHC antigens, the protein can be recognized by a broad spectrum of HLA-A, HLA-B, HLA-C, HLA-G and HLA-F alleles. It expressed in B cells, monocytes and various dendritic cell (DC) subsets including myeloid, plasmacytoid and tolerogenic DCs. Diseases associated with LILRB1 include Alzheimers Disease 12 and Severe Pre-Eclampsia.

Note

For Research Use Only , Not for Diagnostic Use.