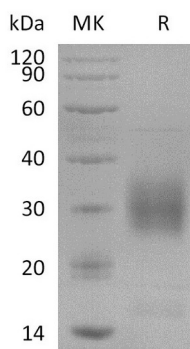


Summary

Name	NKp80
Purity	Greater than 95% as determined by reducing SDS-PAGE
Endotoxin level	<1 EU/μg as determined by LAL test.
Construction	Recombinant Killer cell lectin-like receptor subfamily F member 1 is produced by our Mammalian expression system and the target gene encoding Val66-Tyr231 is expressed with a 6His tag at the N-terminus.
Accession #	Q9NZS2
Host	Human Cells
Species	Human
Predicted Molecular Mass	20.1 KDa
Formulation	Lyophilized from a 0.2 μm filtered solution of PBS, pH 7.4.
Shipping	The product is shipped at ambient temperature. Upon receipt, store it immediately at the temperature listed below.
Stability&Storage	Store at ≤-70°C, stable for 6 months after receipt. Store at ≤-70°C, stable for 3 months under sterile conditions after opening. Please minimize freeze-thaw cycles.
Reconstitution	Always centrifuge tubes before opening. Do not mix by vortex or pipetting. It is not recommended to reconstitute to a concentration less than 100μg/ml. Dissolve the lyophilized protein in distilled water. Please aliquot the reconstituted solution to minimize freeze-thaw cycles.

SDS-PAGE image



Background

Product Name: Recombinant Human NKp80 (N-6His)
Catalog #: PHH2383



Alternative Names

Killer cell lectin-like receptor subfamily F member 1; Lectin-like receptor F1; KLRF1; Activating coreceptor NKp80; C-type lectin domain family 5 member C; CLEC5C

Background

Killer cell lectin-like receptor subfamily F member 1 (KLRF1) is known as NKp80. Human NKp80, a member of the C-type lectin family of proteins (1 - 3), is 231 aa in length with a 38 amino acid (aa) cytoplasmic region, a 21 aa transmembrane region, and a 172 aa extracellular domain (ECD). The protein strongly expressed in peripheral blood leukocytes and spleen, with weaker expression in lymph node and adult liver, and no expression detected in bone marrow, thymus, and fetal liver. Its function involved in the natural killer (NK)-mediated cytotoxicity of PHA-induced lymphoblasts.

Note

For Research Use Only , Not for Diagnostic Use.