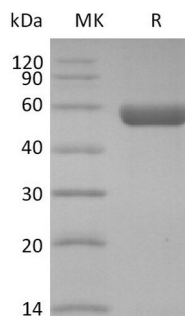


Product Name: Recombinant Human HLA-A*0201 GP100 complex Protein (C-10His)
Catalog #: PHH2316

Summary

Name	HLA-A*0201 GP100 complex Protein
Purity	Greater than 95% as determined by reducing SDS-PAGE
Endotoxin level	<1 EU/μg as determined by LAL test.
Construction	Recombinant Human HLA-A*0201 GP100 complex Protein is produced by our Mammalian expression system and the target gene encoding (IMDQVPFSV)&Ile21-Met119&Gly25-Ile308 (Ala269Val) is expressed with a 10His tag at the C-terminus.
Accession #	P61769&P01892
Host	Human Cells
Species	Human
Predicted Molecular Mass	49.1 KDa
Formulation	Supplied as a 0.2 μm filtered solution of PBS, 0.5M Arg, 0.1M Glu, pH 7.4.
Shipping	The product is shipped on dry ice/polar packs. Upon receipt, store it immediately at the temperature listed below.
Stability&Storage	Store at ≤-70°C, stable for 6 months after receipt. Store at ≤-70°C, stable for 3 months under sterile conditions after opening. Please minimize freeze-thaw cycles.
Reconstitution	

SDS-PAGE image



Background

Alternative Names	HLA-A*0201 GP100 complex
Background	GP100 Plays a central role in the biogenesis of melanosomes. Involved in the



Product Name: Recombinant Human HLA-A*0201 GP100 complex Protein (c-10His)
Catalog #: PHH2316

maturation of melanosomes from stage I to II. The transition from stage I melanosomes to stage II melanosomes involves an elongation of the vesicle, and the appearance within of distinct fibrillar structures.

Note

For Research Use Only , Not for Diagnostic Use.