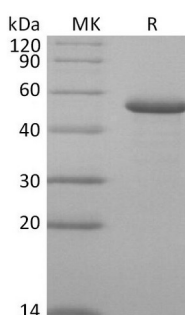


Summary

Name	RCN2
Purity	Greater than 95% as determined by reducing SDS-PAGE
Endotoxin level	<1 EU/μg as determined by LAL test.
Construction	Recombinant Human Reticulocalbin-2 is produced by our Mammalian expression system and the target gene encoding Gly23-Leu317 is expressed with a 6His tag at the C-terminus.
Accession #	Q14257
Host	Human Cells
Species	Human
Predicted Molecular Mass	35.6 KDa
Formulation	Supplied as a 0.2 μm filtered solution of 20mM Tris-HCl, 10% Glycerol, 1mM DTT, pH 8.0.
Shipping	The product is shipped on dry ice/polar packs. Upon receipt, store it immediately at the temperature listed below.
Stability&Storage	Store at ≤-70°C, stable for 6 months after receipt. Store at ≤-70°C, stable for 3 months under sterile conditions after opening. Please minimize freeze-thaw cycles.
Reconstitution	

SDS-PAGE image



Background

Alternative Names Reticulocalbin-2; RCN2; E6BP; ERC55

Background Reticulocalbin-2 (RCN2, also named as ERC-55), is a 55-kDa Ca²⁺-binding protein containing six EF-hands, which was identified to be localized in endoplasmic

Product Name: Recombinant Human RCN2 (C-6His)
Catalog #: PHH2306



reticulum. RCN2 is belonging to Reticulocalbin (RCN) family, the family members could play oncogenic roles in human malignancies and facilitate tumor cell proliferation and metastasis. Recently, studies on RCN2 functions mainly focused on its role in differentiation and endocrine regulation in mouse. Another study has suggested that RCN2 could be a potential tumor-associated antigen for mammary cancer immunological prevention. Up to now, the experimental evidence uncovering the role of RCN2 in cancer is very limited.

Note

For Research Use Only , Not for Diagnostic Use.