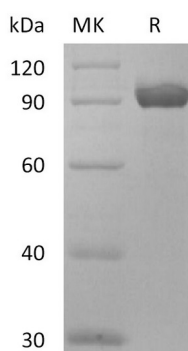


Summary

Name	NPR3/NPRC
Purity	Greater than 95% as determined by reducing SDS-PAGE
Endotoxin level	<1 EU/ μ g as determined by LAL test.
Construction	Recombinant Human Atrial Natriuretic Peptide Receptor 3 is produced by our Mammalian expression system and the target gene encoding Thr24-Glu481 is expressed with a human IgG1 Fc tag at the C-terminus.
Accession #	P17342
Host	Human Cells
Species	Human
Predicted Molecular Mass	77.5 KDa
Formulation	Lyophilized from a 0.2 μ m filtered solution of PBS, pH 7.4.
Shipping	The product is shipped at ambient temperature. Upon receipt, store it immediately at the temperature listed below.
Stability&Storage	Store at \leq -70°C, stable for 6 months after receipt. Store at \leq -70°C, stable for 3 months under sterile conditions after opening. Please minimize freeze-thaw cycles.
Reconstitution	Always centrifuge tubes before opening. Do not mix by vortex or pipetting. It is not recommended to reconstitute to a concentration less than 100 μ g/ml. Dissolve the lyophilized protein in distilled water. Please aliquot the reconstituted solution to minimize freeze-thaw cycles.

SDS-PAGE image



Background

Product Name: Recombinant Human NPR3 (C-Fc)
Catalog #: PHH2294



Alternative Names

ANP-C; ANPR-C; NPR3; NPRC; NPR-C;ANPRC; C5orf23

Background

Atrial Natriuretic Peptide Receptor-3 (NPR3), also known as NPRC or ANPR-C, is one of the three natriuretic peptide receptors, is a type I transmembrane glycoprotein. The natriuretic system is key to the maintenance of vascular tone and cardiovascular homeostasis. Receptor for the natriuretic peptide hormones, binding with similar affinities atrial natriuretic peptide NPPA/ANP, brain natriuretic peptide NPPB/BNP, and C-type natriuretic peptide NPPC/CNP. May function as a clearance receptor for NPPA, NPPB and NPPC, regulating their local concentrations and effects. Osteocrin was found to be a specific ligand to NPR3. NPR3 is necessary for Osteocrin to regulate femoral, tibial, and metatarsal bone elongation.

Note

For Research Use Only , Not for Diagnostic Use.