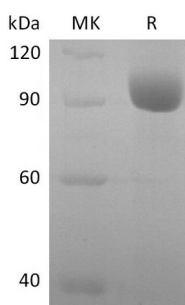


Summary

Name	LILRA3/ILT6/CD85e/Leukocyte Ig-Like Receptor A3
Purity	Greater than 95% as determined by reducing SDS-PAGE
Endotoxin level	<1 EU/μg as determined by LAL test.
Construction	Recombinant Human Leukocyte Immunoglobulin-Like Receptor Subfamily A Member 3 is produced by our Mammalian expression system and the target gene encoding Gly24-Glu439 is expressed with a human IgG1 Fc tag at the C-terminus.
Accession #	AAH28208.1
Host	Human Cells
Species	Human
Predicted Molecular Mass	72.2 KDa
Formulation	Lyophilized from a 0.2 μm filtered solution of PBS, pH 7.4.
Shipping	The product is shipped at ambient temperature. Upon receipt, store it immediately at the temperature listed below.
Stability&Storage	Store at ≤-70°C, stable for 6 months after receipt. Store at ≤-70°C, stable for 3 months under sterile conditions after opening. Please minimize freeze-thaw cycles.
Reconstitution	Always centrifuge tubes before opening. Do not mix by vortex or pipetting. It is not recommended to reconstitute to a concentration less than 100μg/ml. Dissolve the lyophilized protein in distilled water. Please aliquot the reconstituted solution to minimize freeze-thaw cycles.

SDS-PAGE image



Background

Product Name: Recombinant Human LILRA3 (C-Fc)
Catalog #: PHH2283



Alternative Names

Leukocyte immunoglobulin-like receptor subfamily A member 3; CD85 antigen-like family member E; Immunoglobulin-like transcript 6; ILT-6; Leukocyte immunoglobulin-like receptor 4; LIR-4 and Monocyte inhibitory receptor HM43/HM31

Background

Leukocyte immunoglobulin-like receptor subfamily A member 3 is also known as CD85 antigen-like family member E, Immunoglobulin-like transcript 6, ILT-6, Leukocyte immunoglobulin-like receptor 4, LIR-4 and Monocyte inhibitory receptor HM43/HM31. In humans, it is encoded by the LILRA3 gene. It acts as soluble receptor for class I MHC antigens. Binds both classical and non-classical HLA class I molecules but with reduced affinities compared to LILRB1 or LILRB2. It is detected in B-cells, natural killer (NK) cells, peripheral blood monocytes and lung.

Note

For Research Use Only , Not for Diagnostic Use.