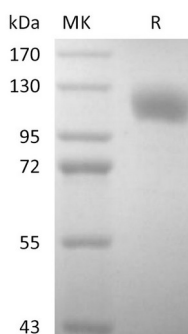


## Summary

|                                 |  |
|---------------------------------|--|
| <b>Name</b>                     | P-selectin/CD62P   |
| <b>Purity</b>                   | Greater than 95% as determined by reducing SDS-PAGE  |
| <b>Endotoxin level</b>          | <1 EU/μg as determined by LAL test.  |
| <b>Construction</b>             | Recombinant Human P-selectin is produced by our Mammalian expression system and the target gene encoding Trp42-Ala771 is expressed with a 6His tag at the C-terminus.  |
| <b>Accession #</b>              | P16109   |
| <b>Host</b>                     | Human Cells  |
| <b>Species</b>                  | Human  |
| <b>Predicted Molecular Mass</b> | 80.8 KDa   |
| <b>Formulation</b>              | Lyophilized from a 0.2 μm filtered solution of PBS, pH 7.4.  |
| <b>Shipping</b>                 | The product is shipped at ambient temperature. Upon receipt, store it immediately at the temperature listed below.   |
| <b>Stability&amp;Storage</b>    | Store at ≤-70°C, stable for 6 months after receipt. Store at ≤-70°C, stable for 3 months under sterile conditions after opening. Please minimize freeze-thaw cycles.   |
| <b>Reconstitution</b>           | Always centrifuge tubes before opening. Do not mix by vortex or pipetting. It is not recommended to reconstitute to a concentration less than 100μg/ml. Dissolve the lyophilized protein in distilled water. Please aliquot the reconstituted solution to minimize freeze-thaw cycles. |

## SDS-PAGE image



## Background

**Product Name: Recombinant Human P-selectin (C-6His)**  
**Catalog #: PHH2253**



---

**Alternative Names**

P-selectin; CD62 antigen-like family member P; Granule membrane protein 140; GMP-140; Leukocyte-endothelial cell adhesion molecule 3; LECAM3; PADGEM

**Background**

P-selectin/CD62P is a single-pass type I membrane protein which is a member of the Selectin family. It consists 768 amino acid (aa). P-selectin is a cell surface glycoprotein expressed by activated platelets and endothelial cells. It induced expression in lung, liver, kidney and heart after endotoxin treatment. Ca<sup>2+</sup>-dependent receptor for myeloid cells that binds to carbohydrates on neutrophils and monocytes. It mediates the interaction of activated endothelial cells or platelets with leukocytes. The ligand recognized is sialyl-Lewis X. It also mediates rapid rolling of leukocyte rolling over vascular surfaces during the initial steps in inflammation through interaction with PSGL1. P-selectin interacts with SNX17, PSGL1/SEPL, PODXL2, mediates neutrophil adhesion and leukocyte rolling. This interaction requires the sialyl-Lewis X epitope of PSGL1 and PODXL2, and specific tyrosine sulfation on PSGL1.

**Note**

For Research Use Only , Not for Diagnostic Use.